

Symmetra™ PX

100 kW 208 V

Technical Specifications

Including Optional 100 kW Modular PDUs and Optional 300 mm Maintenance Bypass Panel (600:208 V, 480:208 V, 208:208 V, 208 V Transformerless)

04/2015



Legal Information

The Schneider Electric brand and any registered trademarks of Schneider Electric Industries SAS referred to in this guide are the sole property of Schneider Electric SA and its subsidiaries. They may not be used for any purpose without the owner's permission, given in writing. This guide and its content are protected, within the meaning of the French intellectual property code (Code de la propriété intellectuelle français, referred to hereafter as "the Code"), under the laws of copyright covering texts, drawings and models, as well as by trademark law. You agree not to reproduce, other than for your own personal, noncommercial use as defined in the Code, all or part of this guide on any medium whatsoever without Schneider Electric's permission, given in writing. You also agree not to establish any hypertext links to this guide or its content. Schneider Electric does not grant any right or license for the personal and noncommercial use of the guide or its content, except for a non-exclusive license to consult it on an "as is" basis, at your own risk. All other rights are reserved.

Electrical equipment should be installed, operated, serviced, and maintained only by qualified personnel. No responsibility is assumed by Schneider Electric for any consequences arising out of the use of this material.

As standards, specifications, and designs change from time to time, please ask for confirmation of the information given in this publication.

Table of Contents

Important Safety Information	5
Safety Precautions	6
Technical Data	8
Model List	8
Input Power Factor	8
Efficiency	8
Efficiency Curve in Normal Operation and at Nominal Input	
Voltage	9
Derating due to Load Power Factor	9
Batteries	9
Efficiency DC to AC at Nominal Battery Voltage	9
Battery Run-Times — Schneider Electric Battery Solutions	10
Battery Discharge Current	19
End of Discharge Voltage	19
Battery Gassing Rates Per Shelf/string (Cubic Feet per Hour)	19
Electrolyte Values	20
Battery Material Safety Data Sheet	20
Compliance	20
Facility Planning	21
Specifications for Installations without PDU	21
AC Input	21
AC Output	21
Recommended Current Rating of Feeder Circuit Breakers	22
Recommended Conductor Sizes	22
Recommended Bolt and Lug Sizes	23
Specifications for Installations with PDU or Maintenance Bypass	
Cabinet	23
AC Input	23
AC Output	24
PDU Subfeed Circuit Breaker Trip Currents Merlin Gerin NSJ400 -	
STR23SP Electronic Trip Unit (400 A frame)	24
L-Frame with Micrologic 3.3 S Trip Unit (Subfeed Breaker)	24
L-Frame with Micrologic 3.3 S Trip Unit (QB 600 V Canadian	
unit)	25
L-Frame Mission Critical with Micrologic 3.3 S-W 600 A Trip Unit	25
L-Frame Mission Critical with Micrologic 3.3 S-W 400 A Trip Unit	25
Recommended Current Rating of Supply OCPD	25
Inrush Currents	26
Recommended Conductor Sizes	26
Batteries	27
Physical	28
Weights and Dimensions	28
Shipping Weights and Dimensions	28
Clearance Symmetra PX 100 kW	29
Environmental	29
Heat Dissipation	29
Drawings	30

Symmetra PX 100 kW 208 V Single Mains Bottom Feed with PDU with Transformer	31
Symmetra PX 100 kW 208 V Dual Mains Bottom Feed with PDU with Transformer	32
Symmetra PX 100 kW 208 V Single Mains Top Feed with PDU with Transformer	33
Symmetra PX 100 kW 208 V Dual Mains Top Feed with PDU with Transformer	34
Symmetra PX 100 kW 208 V Single Mains Bottom Feed with PDU without Transformer	35
Symmetra PX 100 kW 208 V Dual Mains Bottom Feed with PDU without Transformer	36
Symmetra PX 100 kW 208 V kW Single Mains Top Feed with PDU without Transformer	37
Symmetra PX 100 kW 208 V Dual Mains Top Feed with PDU without Transformer	38
Symmetra PX 100 kW 480 V Single Mains Bottom Feed with PDU with Transformer	39
Symmetra PX 100 kW 480 V Dual Mains Bottom Feed with PDU with Transformer	40
Symmetra PX 100 kW 480 V Single Mains Top Feed with PDU with Transformer	41
Symmetra PX 100 kW 480 V Dual Mains Top Feed with PDU with Transformer	42
Symmetra PX 100 kW 600 V Single Mains Bottom Feed with PDU with Transformer	43
Symmetra PX 100 kW 600 V Dual Mains Bottom Feed with PDU with Transformer	44
Symmetra PX 100 kW 600 V Single Mains Top Feed with PDU with Transformer	45
Symmetra PX 100 kW 600 V Dual Mains Top Feed with PDU with Transformer	46
Options	47
Hardware Options.....	47
Configuration Options	50
Schneider Electric Limited Factory Warranty.....	51

Important Safety Information

Read these instructions carefully and look at the equipment to become familiar with it before trying to install, operate, service or maintain it. The following safety messages may appear throughout this manual or on the equipment to warn of potential hazards or to call attention to information that clarifies or simplifies a procedure.



The addition of this symbol to a “Danger” or “Warning” safety message indicates that an electrical hazard exists which will result in personal injury if the instructions are not followed.



This is the safety alert symbol. It is used to alert you to potential personal injury hazards. Obey all safety messages with this symbol to avoid possible injury or death.

⚠ DANGER
<p>DANGER indicates a hazardous situation which, if not avoided, will result in death or serious injury.</p> <p>Failure to follow these instructions will result in death or serious injury.</p>

⚠ WARNING
<p>WARNING indicates a hazardous situation which, if not avoided, could result in death or serious injury.</p> <p>Failure to follow these instructions can result in death, serious injury, or equipment damage.</p>

⚠ CAUTION
<p>CAUTION indicates a hazardous situation which, if not avoided, could result in minor or moderate injury.</p> <p>Failure to follow these instructions can result in injury or equipment damage.</p>

NOTICE
<p>NOTICE is used to address practices not related to physical injury. The safety alert symbol shall not be used with this type of safety message.</p> <p>Failure to follow these instructions can result in equipment damage.</p>

Please Note

Electrical equipment should only be installed, operated, serviced, and maintained by qualified personnel. No responsibility is assumed by Schneider Electric for any consequences arising out of the use of this material.

A qualified person is one who has skills and knowledge related to the construction, installation, and operation of electrical equipment and has received safety training to recognize and avoid the hazards involved.

Safety Precautions

⚠ DANGER

HAZARD OF ELECTRIC SHOCK, EXPLOSION OR ARC FLASH

- The product must be installed according to the specifications and requirements as defined by Schneider Electric. It concerns in particular the external and internal protections (upstream circuit breakers, battery circuit breakers, cabling, etc.) and environmental requirements. No responsibility is assumed by Schneider Electric if these requirements are not respected.
- After the UPS system has been electrically wired, do not start up the system. Start-up must only be performed by Schneider Electric.

Failure to follow these instructions will result in death or serious injury.

⚠ DANGER

HAZARD OF ELECTRIC SHOCK, EXPLOSION OR ARC FLASH

The UPS System must be installed according to local and national regulations. Install the UPS according to:

- IEC 60364 (including 60364-4-41 - protection against electric shock, 60364-4-42 - protection against thermal effect, and 60364-4-43 - protection against overcurrent), **or**
- NEC NFPA 70

depending on which one of the standards apply in your local area.

Failure to follow these instructions will result in death or serious injury.

⚠ DANGER

HAZARD OF ELECTRIC SHOCK, EXPLOSION OR ARC FLASH

- Install the UPS system in a temperature controlled area free of conductive contaminants and humidity.
- Install the UPS system on a non-inflammable, level and solid surface (e.g. concrete) that can support the weight of the system.

Failure to follow these instructions will result in death or serious injury.

⚠ DANGER**HAZARD OF ELECTRIC SHOCK, EXPLOSION OR ARC FLASH**

The UPS is not designed for and must therefore not be installed in the following unusual operating environments:

- Damaging fumes
- Explosive mixtures of dust or gases, corrosive gases, or conductive or radiant heat from other sources
- Moisture, abrasive dust, steam or in an excessively damp environment
- Fungus, insects, vermin
- Salt-laden air or contaminated cooling refrigerant
- Pollution degree higher than 2 according to IEC 60664-1
- Exposure to abnormal vibrations, shocks, and tilting
- Exposure to direct sunlight, heat sources, or strong electromagnetic fields

Failure to follow these instructions will result in death or serious injury.

⚠ WARNING**HAZARD OF OVERHEATING**

Respect the space requirements around the UPS system and do not cover the product's ventilation openings when the UPS system is in operation.

Failure to follow these instructions can result in death, serious injury, or equipment damage.

⚠ WARNING**HAZARD OF EQUIPMENT DAMAGE**

Do not connect the UPS output to regenerative load systems including photovoltaic systems and speed drives.

Failure to follow these instructions can result in death, serious injury, or equipment damage.

Technical Data

Model List

- Symmetra PX 10 kW Scalable to 100 kW, 208 V with Startup
- Symmetra PX 20 kW Scalable to 100 kW, 208 V with Startup
- Symmetra PX 30 kW Scalable to 100 kW, 208 V with Startup
- Symmetra PX 40 kW Scalable to 100 kW, 208 V with Startup
- Symmetra PX 50 kW Scalable to 100 kW, 208 V with Startup
- Symmetra PX 60 kW Scalable to 100 kW, 208 V with Startup
- Symmetra PX 70 kW Scalable to 100 kW, 208 V with Startup
- Symmetra PX 80 kW Scalable to 100 kW, 208 V with Startup
- Symmetra PX 90 kW Scalable to 100 kW, 208 V with Startup
- Symmetra PX 100 kW Scalable to 100 kW, 208 V with Startup



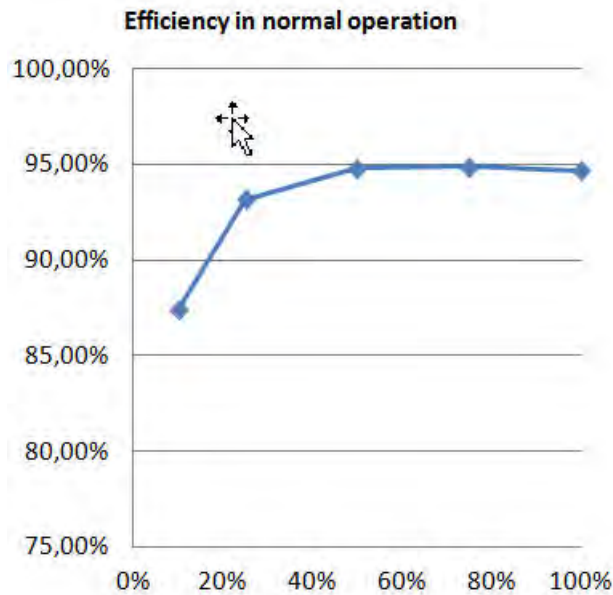
Input Power Factor

	Input Power Factor
> 25% load	> 0.99
> 15% load	> 0.95
> 10% load	> 0.90

Efficiency

	100 kW System
25% load	93.2
50% load	94.8
75% load	94.9
100% load	94.7

Efficiency Curve in Normal Operation and at Nominal Input Voltage



Derating due to Load Power Factor

The Symmetra PX 100 kW exhibits no derating due to leading or lagging load power factor.

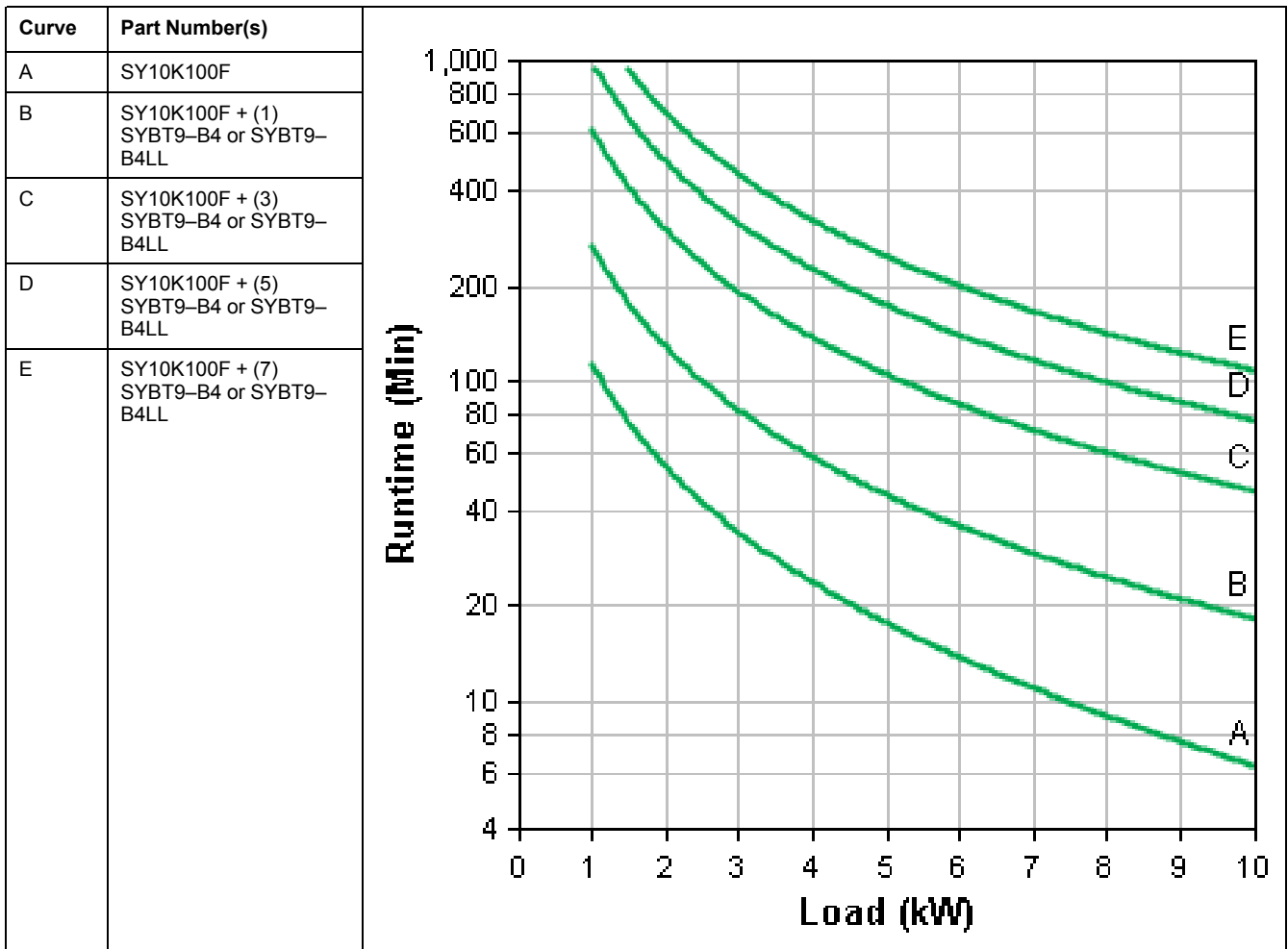
Batteries

Efficiency DC to AC at Nominal Battery Voltage

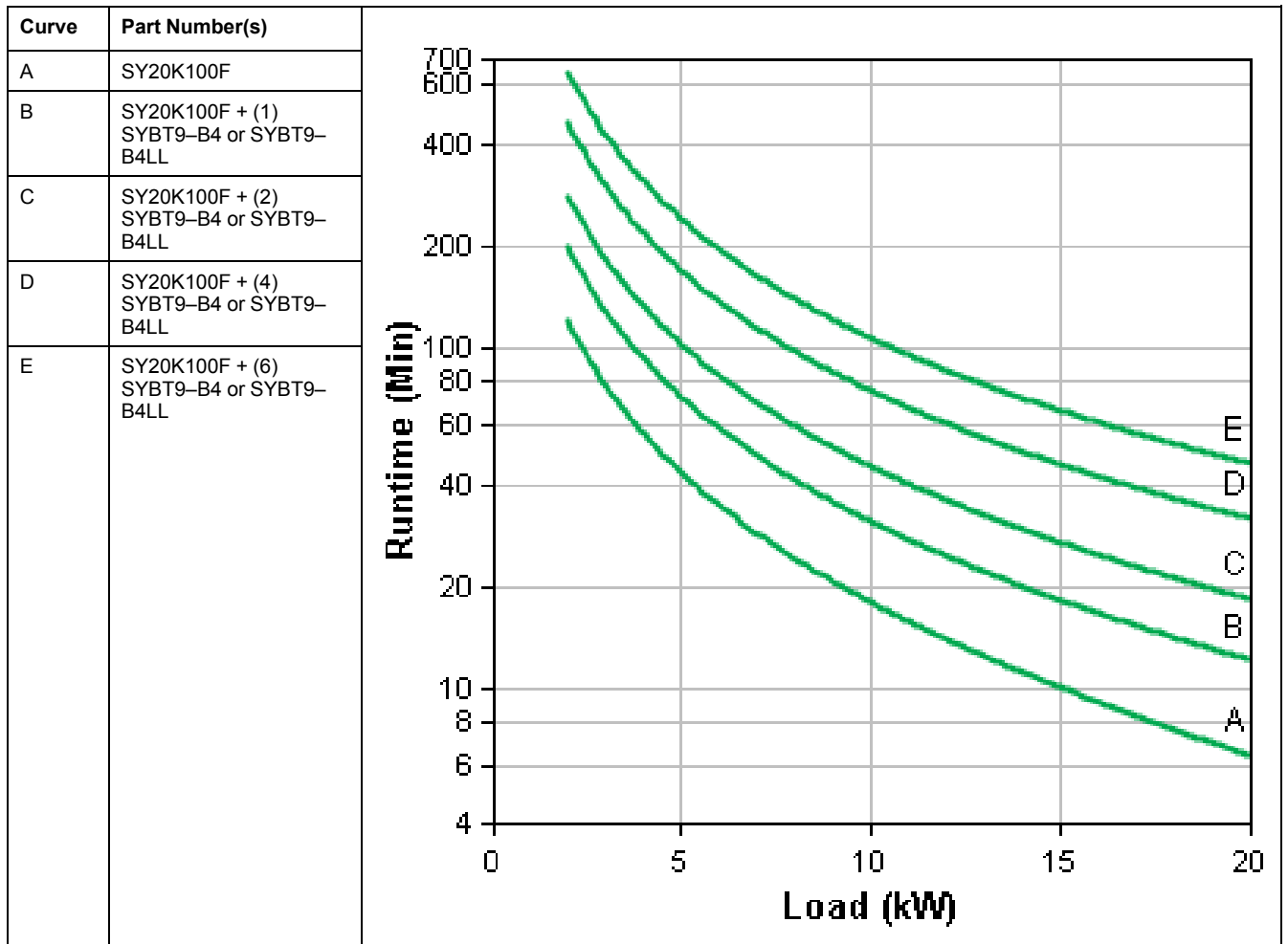
	100 kW
25% - 50% load	≥ 93.2
50% - 100% load	≥ 94.7

Battery Run-Times — Schneider Electric Battery Solutions

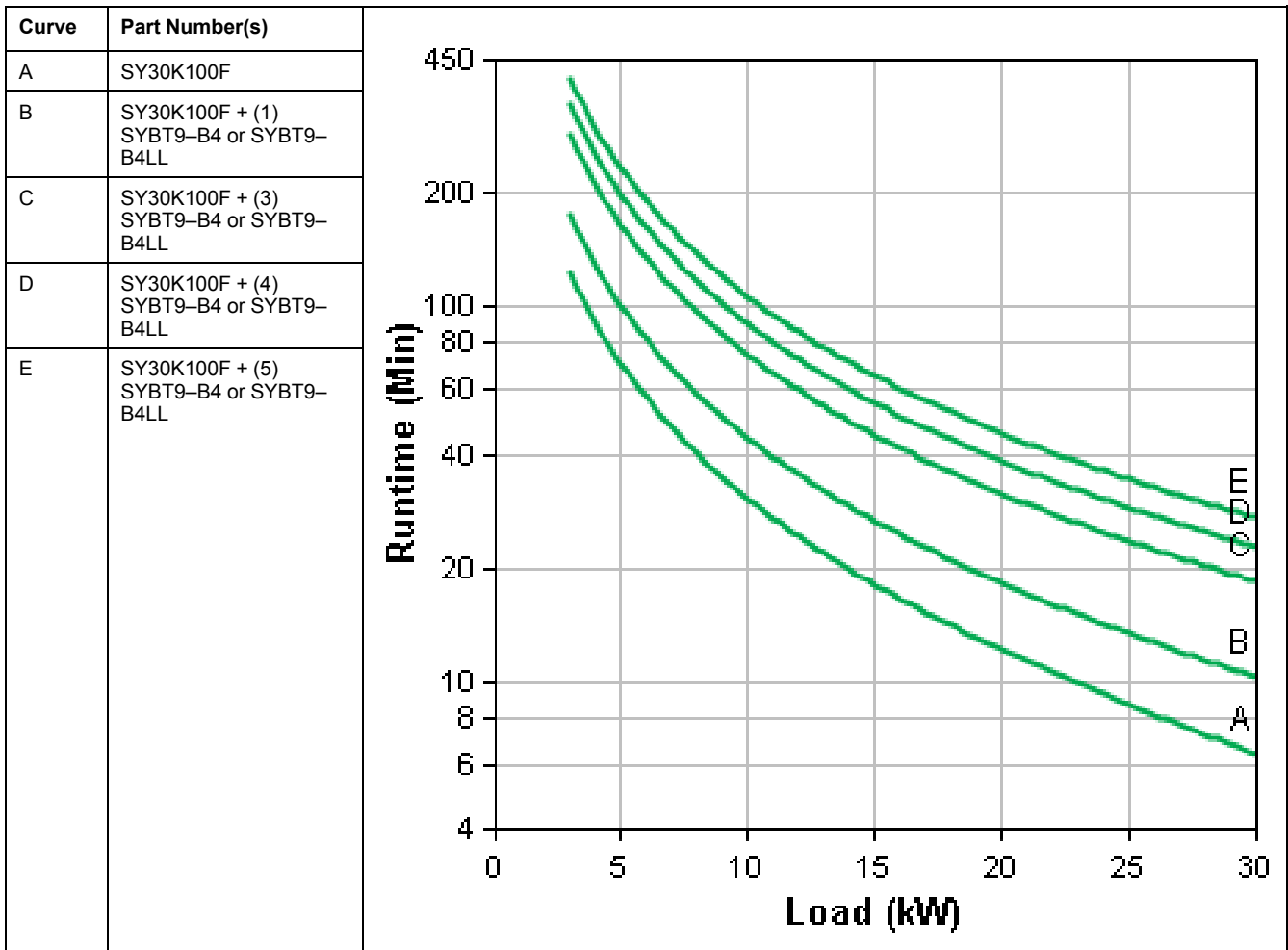
Symmetra PX 10 kW Scalable to 100 kW Battery Run-Times (Minutes)



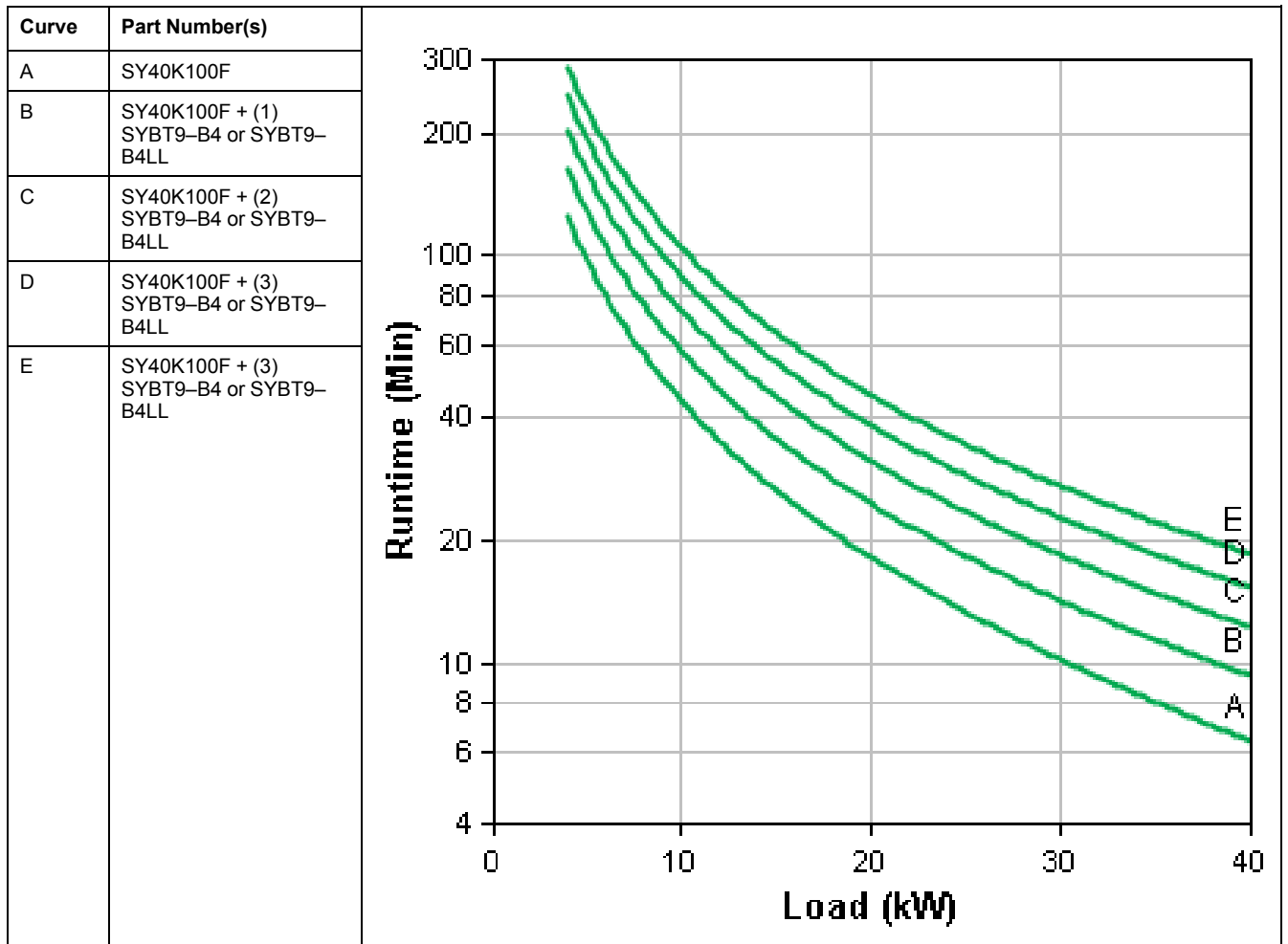
Symmetra PX 20 kW Scalable to 100 kW Battery Run-Times (Minutes)



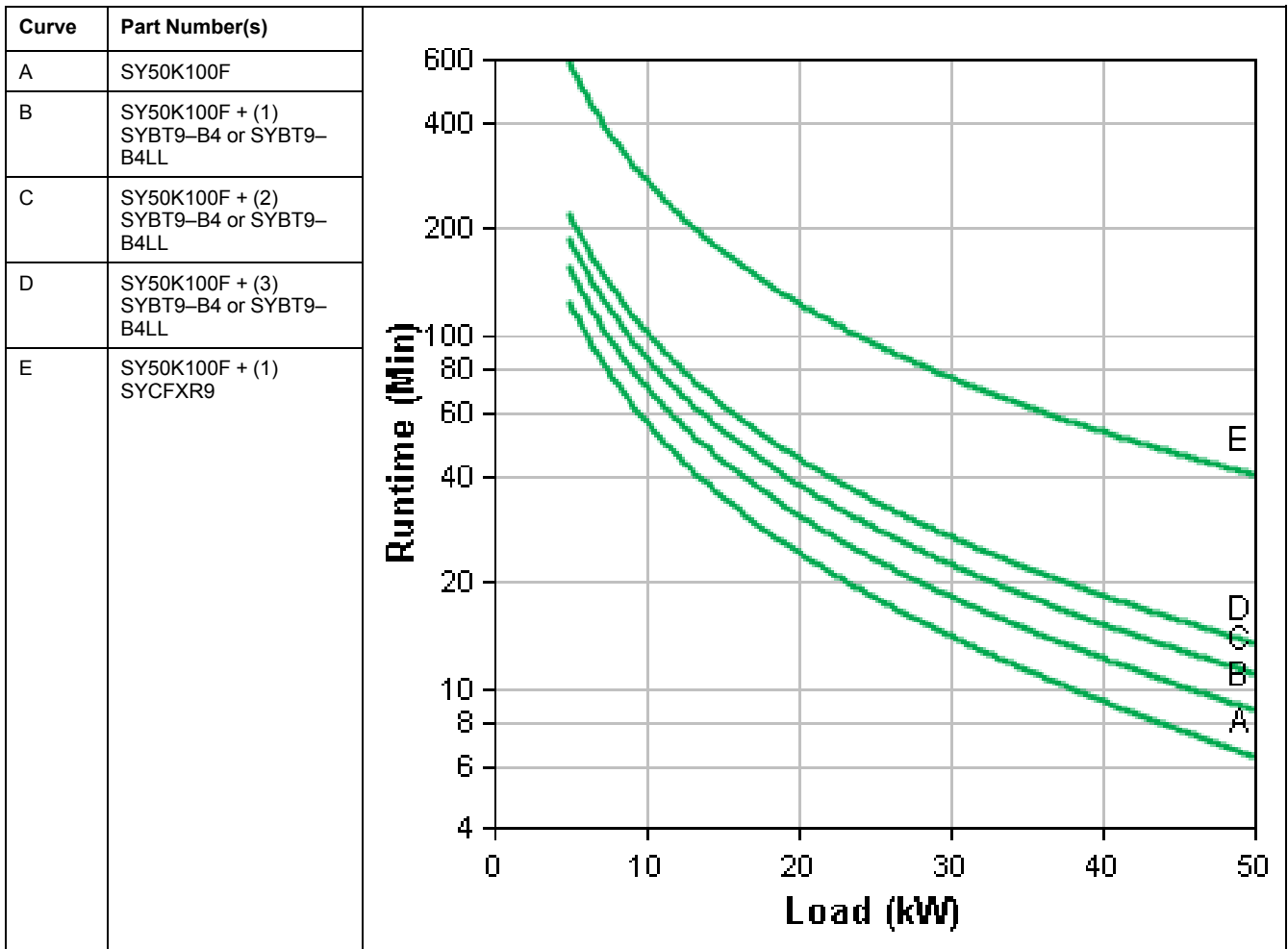
Symmetra PX 30 kW Scalable to 100 kW Battery Run-Times (Minutes)



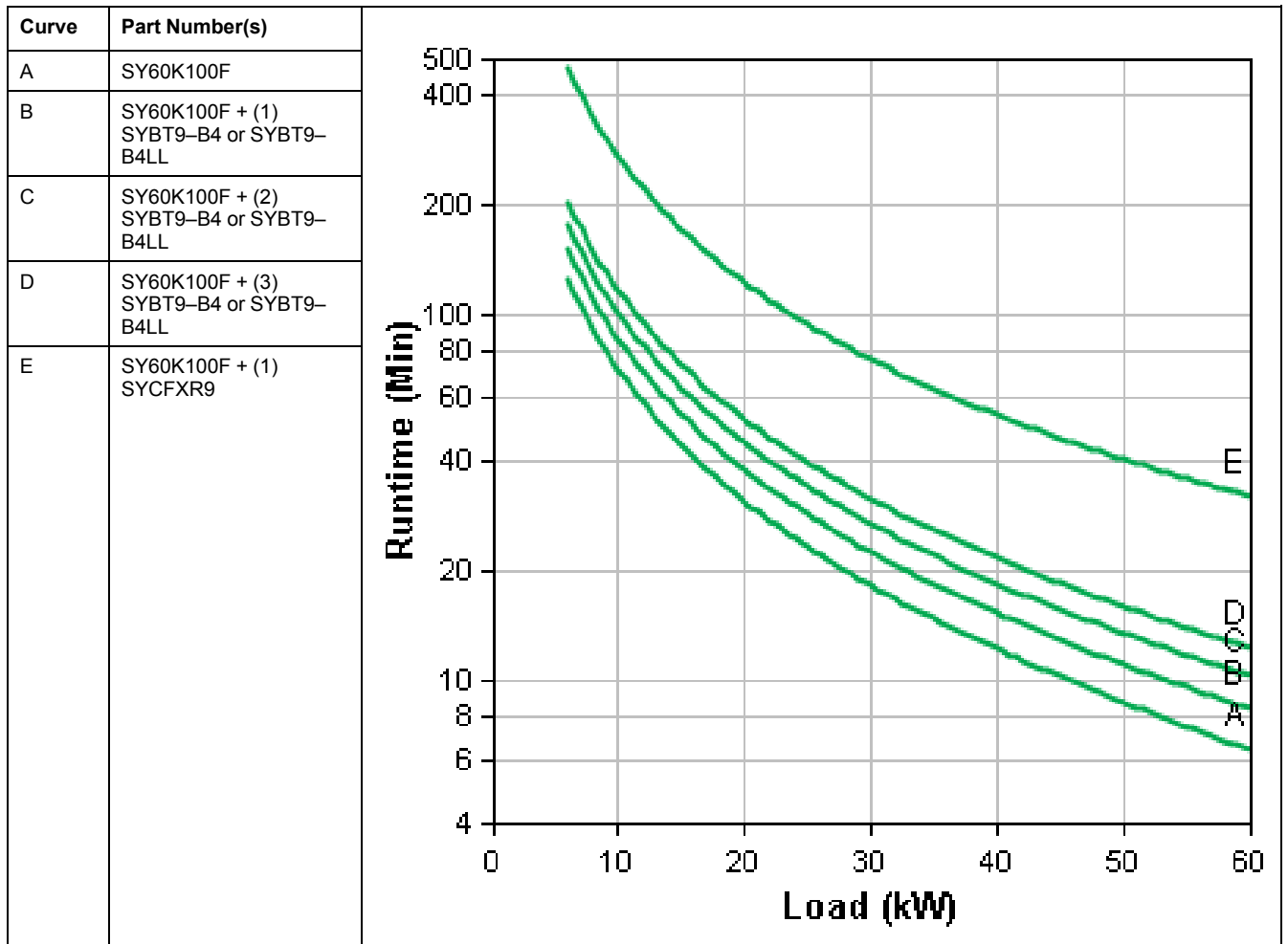
Symmetra PX 40 kW Scalable to 100 kW Battery Run-Times (Minutes)



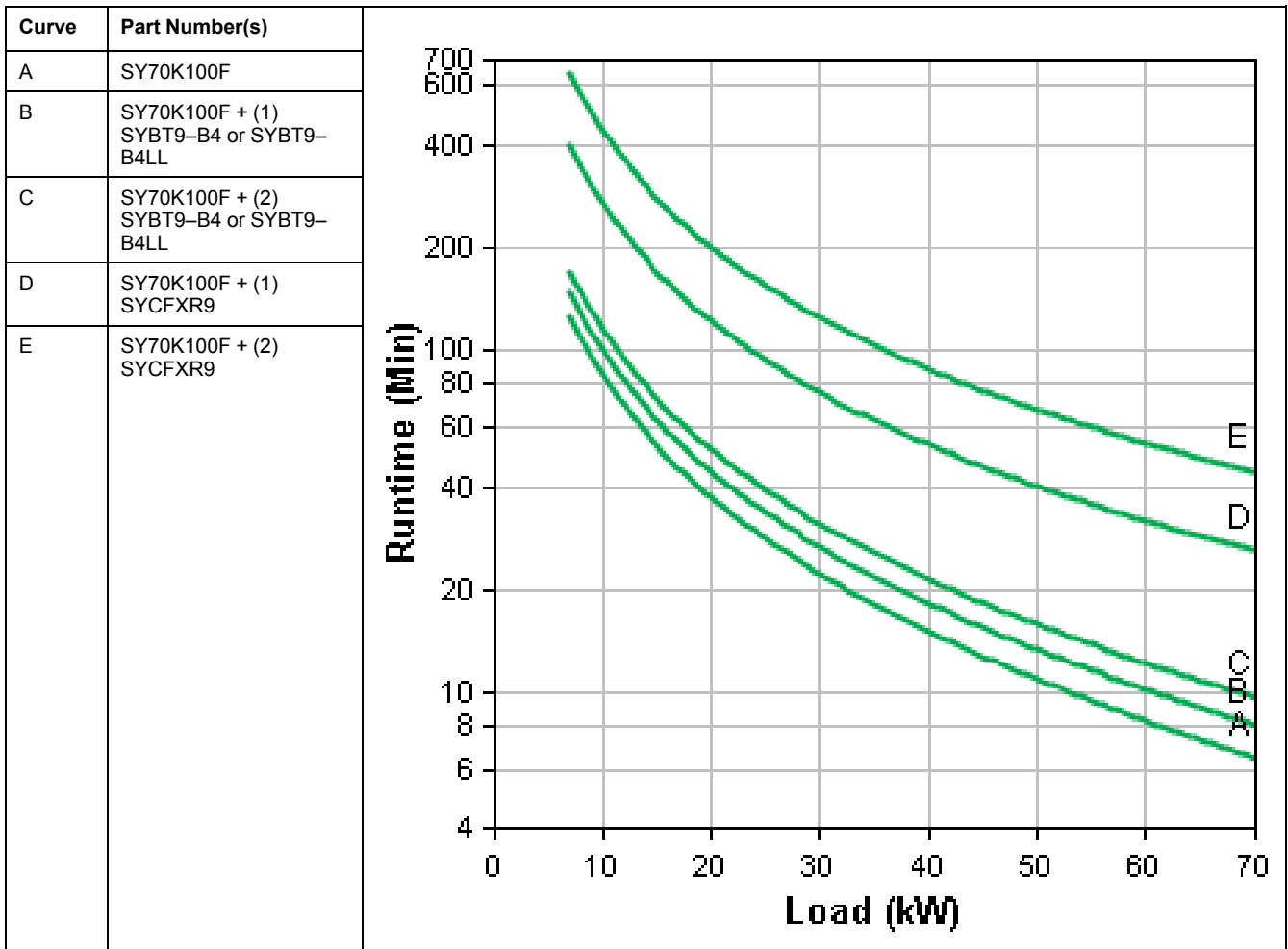
Symmetra PX 50 kW Scalable to 100 kW Battery Run-Times (Minutes)



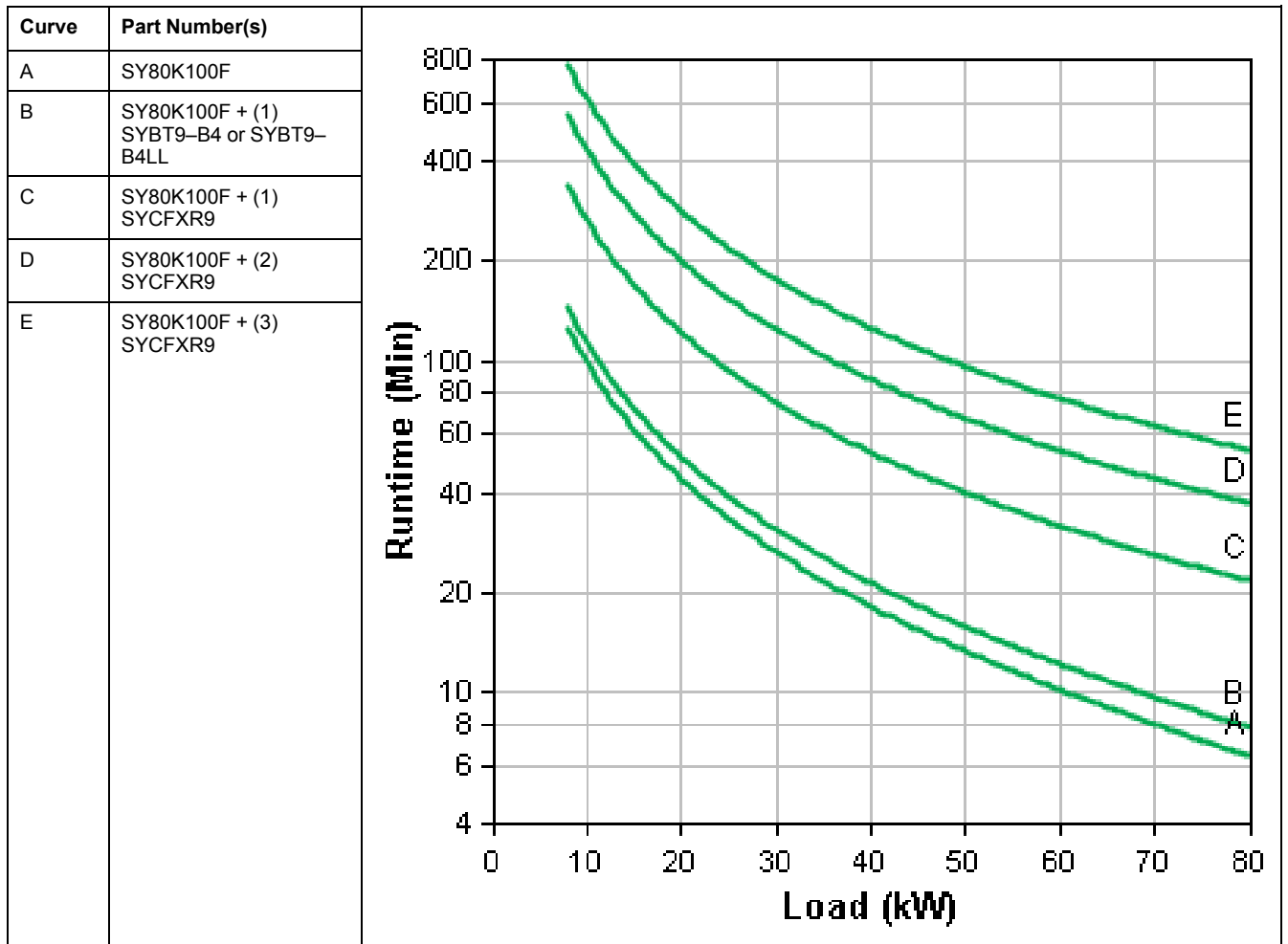
Symmetra PX 60 kW Scalable to 100 kW Battery Run-Times (Minutes)



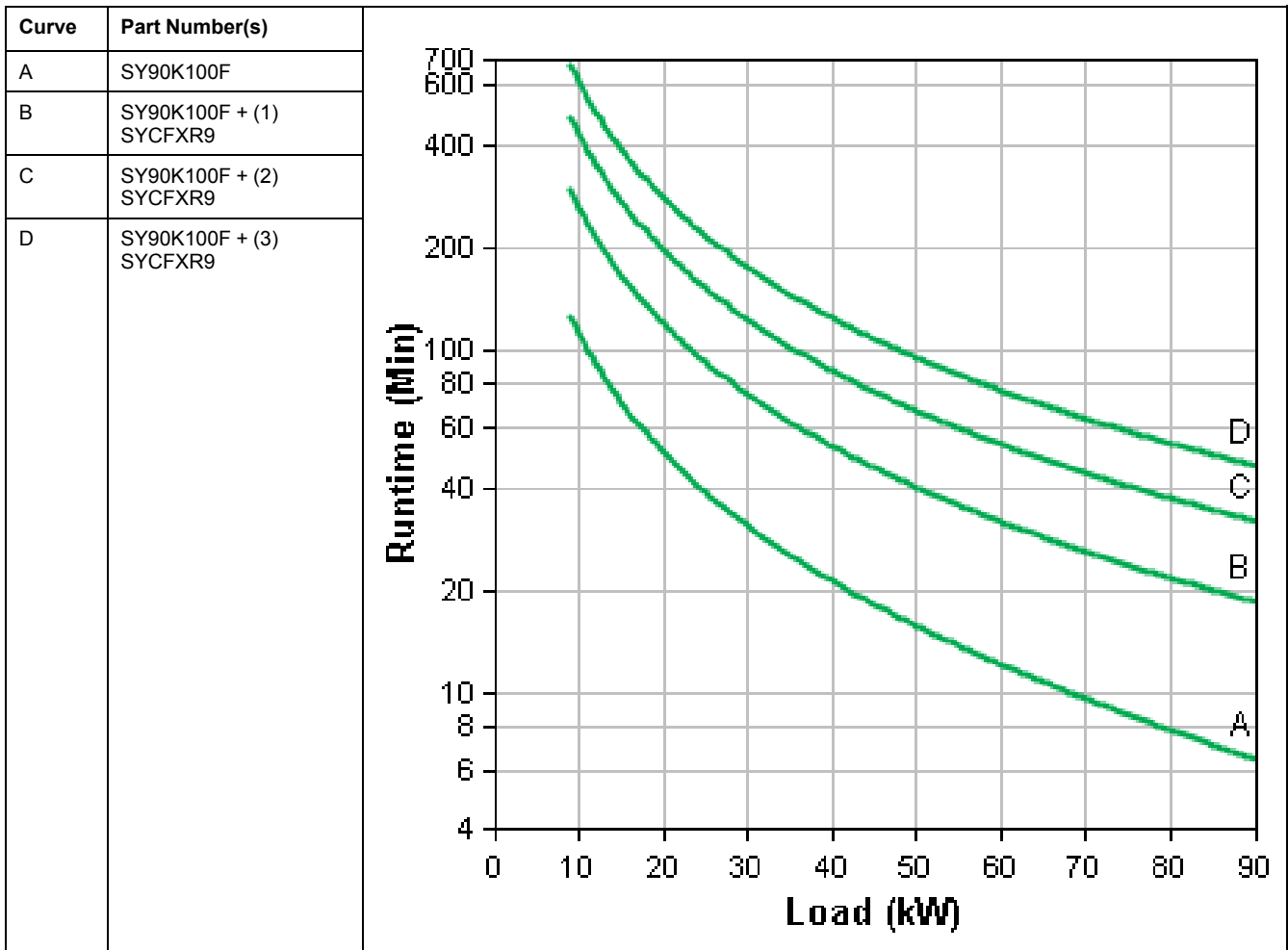
Symmetra PX 70 kW Scalable to 100 kW Battery Run-Times (Minutes)



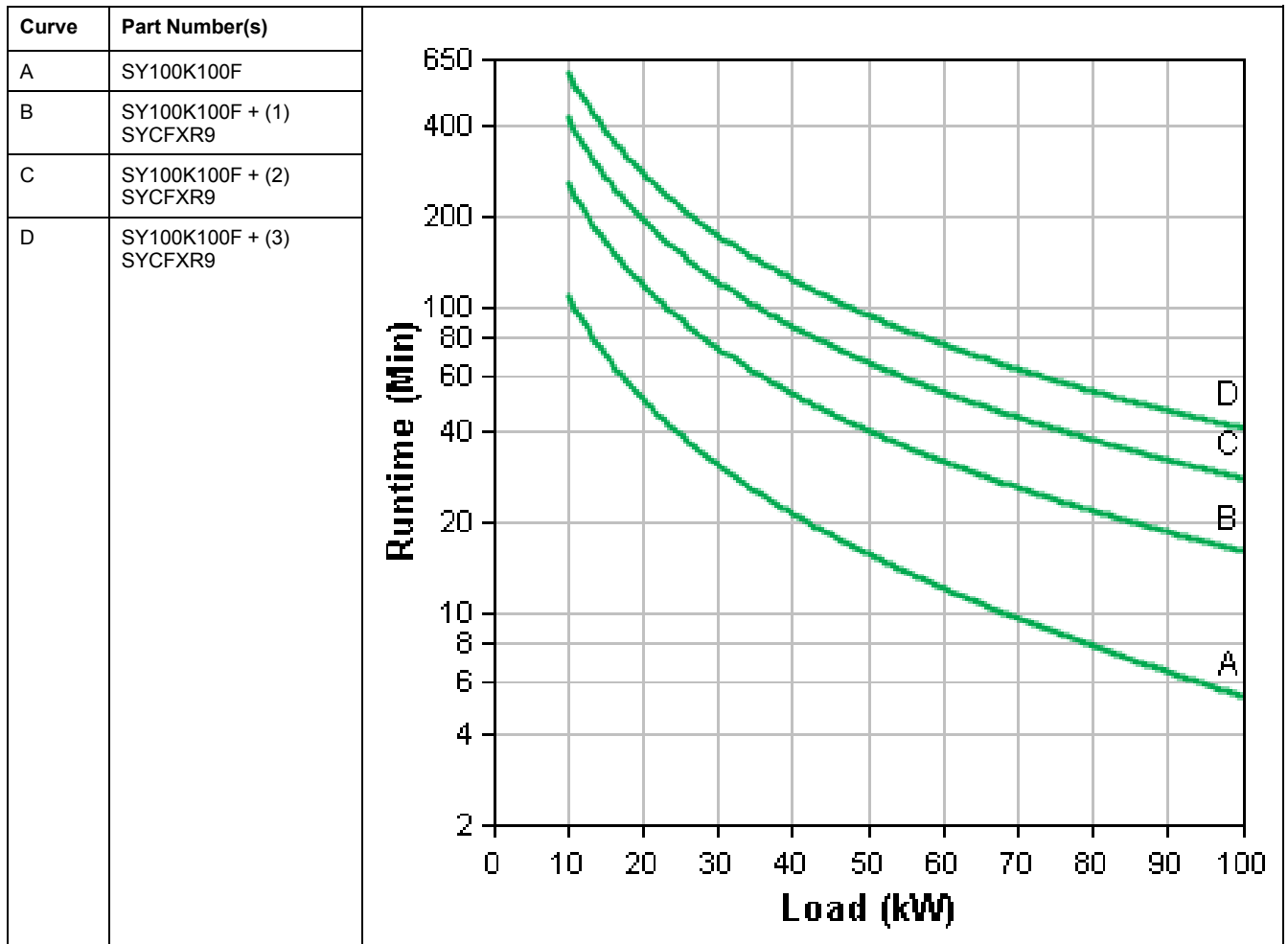
Symmetra PX 80 kW Scalable to 100 kW Battery Run-Times (Minutes)



Symmetra PX 90 kW Scalable to 100 kW Battery Run-Times (Minutes)



Symmetra PX 100 kW Battery Run-Times (Minutes)



Battery Discharge Current

I bat at bat nominal, 100% load	275
I bat at bat min, 100% load	343

End of Discharge Voltage

End of discharge voltage at full load (VDC)	154
End of discharge voltage at no load (VDC)	168

Battery Gassing Rates Per Shelf/string (Cubic Feet per Hour)

The battery gassing rates are calculated based on:

- Gassing rate at 2.4 V/cell (ft³/hr) assuming 98% recombination efficiency = 0.00021
- Six cells per cartridge
- Eight cartridges per battery unit
- Four battery units (one battery module) per shelf

Battery modules	1	2	3	4	5	6	7	8	9
	0.04032	0.08064	0.12096	0.16128	0.20160	0.24192	0.28224	0.32256	0.36288

Electrolyte Values

	Battery unit	String of batteries (4 battery units)
Electrolyte volume L (gal)	2.78 (0.61)	11.14 (2.45)
Electrolyte weight kg (lbs)	3.62 (7.98)	14.46 (31.90)
Sulfuric acid weight kg (lbs)	1.43 (3.16)	5.73 (12.6)

Battery Material Safety Data Sheet

NOTE: For Material Safety Data Sheet (MSDS), go to the Knowledge Base <http://www.apc.com/site/support/us/en/faq/> and type "MSDS" to get the latest MSDS information.

Compliance

Safety	UL1778 4th Edition
EMC/EMI/RFI	FCC47 Part 15
Markings	CE, UL1778
Performance	EN/IEC62040-3
Seismic pre-approval	OSHPD

Facility Planning

Specifications for Installations without PDU

AC Input

NOTE: Delta input is not permitted.

	208 V UPS only
Connection type, single feed	3PH + N + G
Connection type, dual feed	Input: 3PH +G Bypass: 3PH + N + G
Input frequency (Hz)	50 or 60
Input frequency range (Hz)	40–70 with 10 Hz/sec slew rate
Nominal input current (A) ¹	296
Maximum input current at low charge rate – 10% (A) ²	327
Maximum input current at high charge rate – 20% (A) ²	332
Input current limit (A) ³	360
Nominal bypass input current (A)	278
Total harmonic distortion (THDI)	< 5% at full load (symmetrical)
Maximum short circuit withstand (kA) ⁴	30

AC Output

	208 V UPS only
Connection type	3PH + N + G or 3PH + G
Nominal output current (A)	278

1. Input current based on nominal voltage and rated load, batteries fully charged.
2. Input current based on full battery recharge, nominal voltage and rated load.
3. Current limitation through electronic current limiting is based on full rated load and limited battery recharge from -10% to -15% input voltage.
4. The maximum short circuit withstand was not evaluated by Underwriters Laboratories.

Recommended Current Rating of Feeder Circuit Breakers

⚠ DANGER

HAZARD OF ELECTRIC SHOCK, EXPLOSION OR ARC FLASH

Connect only to a circuit provided with (see below) amperes maximum branch circuit overcurrent protection in accordance with the National Electric Code, NSI/ NFPA 70.

Failure to follow these instructions will result in death or serious injury.

	208 V UPS only	
	Standard rated (80%)	100% rated
Input (A)	450	400
Bypass (A)	350	300
Battery (A)	350	300
Output (A)	350	300

Recommended Conductor Sizes

⚠ DANGER

HAZARD OF ELECTRIC SHOCK, EXPLOSION OR ARC FLASH

The product must be installed according to the specifications and requirements as defined by Schneider Electric. It concerns in particular the external and internal protections (upstream circuit breakers, battery circuit breakers, cabling, etc.) and environmental requirements. No responsibility is assumed by Schneider Electric if these requirements are not respected.

Failure to follow these instructions will result in death or serious injury.

NOTE: Maximum allowable conductor size: 500 kcmil.

Conductor sizing in this manual is based on Table 310-16 of the National Electrical Code (NEC) with the following assertions.

- 90°C conductors (THHN) for 75°C termination
- 3 current carrying conductors
- An ambient temperature of 30°C
- Use only copper conductors

If the ambient room temperature is greater than 30°C, larger conductors are to be selected in accordance with the correction factors of the NEC.

Equipment Grounding Conductors (EGC) are sized in accordance with NEC Article 250-122 and Table 250-122.

The conductor sizes are recommendations for maximum configurations. Even if the load is less than the maximum rating, it is wise to plan for future load increases. If the system is operated at a lower load than its rating and it is desired to supply the system with a lower rated breaker and smaller conductors, conductor ampacities are to be selected in accordance with the NEC.

	208 V UPS only	
	Standard rated (80%)	100% rated
Input	2 x 4/0 AWG	500 kcmil
Bypass	500 kcmil	300 kcmil
Battery	500 kcmil	300 kcmil
Output	500 kcmil	300 kcmil
Equipment Grounding Conductor	3 AWG	3 AWG

Recommended Bolt and Lug Sizes

Cable	Terminal Bolt Diameter	Cable Lug Type		Crimping tool CT-720 Crimping Die:	
		80% rated	100% rated	80% rated	100% rated
Input	M10	LCA4/0-12H-X	LCA500-12H-X	CD-720-3	CD-720-7
Bypass	M10	LCA500-12H-X	LCA300-12H-X	CD-720-7	CD-720-4
Battery 1	M10	–	LCA300-12H-X	–	CD-720-4
Battery 2	M10	–	LCA300-12H-X	–	CD-720-4
Output	M10	LCA500-12H-X	LCA300-12H-X	CD-720-7	CD-720-4

Specifications for Installations with PDU or Maintenance Bypass Cabinet

AC Input

	208 V : 208 V	480 V : 208 V	600 V : 208 V	Maintenance bypass cabinet or PDU without transformer
Connection type	3PH + G + GEC			L1 + L2 + L3 + N +G
Nominal input frequency (Hz)	57-63			40-70
Nominal input current (A)	302	131	104	297
Maximum input current at low charge rate – 10% (A) ⁵	332	144	115	327
Maximum input current at high charge rate – 20% (A) ⁵	337	146	117	332
Input current limit (A) ⁷	366	165	127	360
Nominal bypass input current (A)	282	122	98	278
Maximum short circuit withstand (kA) ⁸	65	65	25	30

5. Input current based on nominal voltage and rated load, batteries fully charged.
6. Input current based on full battery recharge, nominal voltage and rated load.
7. Current limitation through electronic current limiting is based on full rated load and limited battery recharge from -10% to -15% input voltage.
8. The maximum available fault current was not evaluated by Underwriters Laboratories.

AC Output

	208 V : 208 V	480 V : 208 V	600 V : 208 V	Maintenance bypass cabinet or PDU without transformer
Connection type	4-wire (3PH + N + G) or 3-wire (3PH + G)			
Output voltage	3 x 208/120 V			
Nominal output current (A)	278	278	278	278
Power distribution modules (not included)	20 A, 30 A, 50 A, 60 A			
Subfeed	278 A maximum (included) see following table			

PDU Subfeed Circuit Breaker Trip Currents Merlin Gerin NSJ400 - STR23SP Electronic Trip Unit (400 A frame)

NOTE: This breaker is 100% rated.

Io Setting	Ir Setting							
	1	0.98	0.95	0.93	0.90	0.88	0.85	0.8
0.9	NA	NA	NA	NA	NA	NA	NA	288
0.8	NA	NA	NA	297.6 ⁹	288	281.6	272	256
0.7	280	274.4	266	260.4	252	246.4	238	224
0.63	252	247	239.4	234.4	226.8	221.8	214.2	201.6
0.5	200	196	190	186	180	176	170	160

Long-time (LT) overload protection = $I_n \times I_o \times I_r$ Example: $400 \times 0.5 \times 0.8 = 160$ A. See NEC-2008 Art. 240.6 (C) for additional information.

L-Frame with Micrologic 3.3 S Trip Unit (Subfeed Breaker)

NOTE: This breaker is 100% rated.

NOTE: The maximum subfeed output loading must not be greater than 278 A per phase.

$I_n = 400$ A	Value depending on sensor rating (I_n) and setting on rotary switch									
L Long time protection										
Pick-up (A) Tripping between 1.05 and 1.20 I_n	$I_r =$	125	150	175	200	225	250	300	N/A	N/A
S Short time protection										
Pick-up (A) accuracy $\pm 10\%$	$I_{sd} = I_r \times \dots$	1.5	2	3	4	5	6	7	8	10
I Instantaneous										
Pick-up (A) accuracy $\pm 15\%$	$I_i = I_n \times \dots$	1.5	2	3	4	5	6	8	10	12

9. Factory default: $400 \times 0.93 \times 0.8 = 297.6$ A or ~ 300 A. The maximum Subfeed Output Loading must not be greater than 278 A/phase.

L-Frame with Micrologic 3.3 S Trip Unit (QB 600 V Canadian unit)

NOTE: This breaker is 100% rated.

In = 250 A		Value depending on sensor rating (In) and setting on rotary switch								
L Long time protection										
Pick-up (A) Tripping between 1.05 and 1.20 In	Ir =	70	80	100	125	150	175	200	225	250
S Short time protection										
Pick-up (A) accuracy ±10%	I _{sd} = Ir x ...	1.5	2	3	4	5	6	7	8	10
I Instantaneous										
Pick-up (A) accuracy ±15%	I _i = In x ...	1.5	2	3	4	5	6	8	10	12

L-Frame Mission Critical with Micrologic 3.3 S-W 600 A Trip Unit

NOTE: This breaker is 80% rated.

In=600 A										
S short time protection										
Pick-up (A) accuracy ± 10%	I _{sd} = Ir x...	1.5	2	3	4	5	6	7	8	10
I Instantaneous										
Pick-up (A) accuracy ± 15%	I _i = In x...	1.5	2	3	4	5	6	8	10	11

L-Frame Mission Critical with Micrologic 3.3 S-W 400 A Trip Unit

NOTE: This breaker is 80% rated.

In=400 A										
S short time protection										
Pick-up (A) accuracy ± 10%	I _{sd} = Ir x...	1.5	2	3	4	5	6	7	8	10
I Instantaneous										
Pick-up (A) accuracy ± 15%	I _i = In x...	1.5	2	3	4	5	6	8	10	12

Recommended Current Rating of Supply OCPD

	208 V : 208 V	480 V : 208 V	600 V : 208 V	Maintenance bypass cabinet or PDU without transformer
	Standard rated ¹⁰			
Input (A)	500	225	175	450

10. Standard circuit breakers are rated to carry 80% of their current rating continuously.

Inrush Currents

The supply overcurrent protective device must be able to handle the below transformer inrush currents.

	208 V : 208 V	480 V : 208 V	600 V : 208 V
Inrush current (A)	4500	2000	1500

Recommended Conductor Sizes

⚠ DANGER

HAZARD OF ELECTRIC SHOCK, EXPLOSION OR ARC FLASH

The product must be installed according to the specifications and requirements as defined by Schneider Electric. It concerns in particular the external and internal protections (upstream circuit breakers, battery circuit breakers, cabling, etc.) and environmental requirements. No responsibility is assumed by Schneider Electric if these requirements are not respected.

Failure to follow these instructions will result in death or serious injury.

NOTE: All wiring must comply with all applicable national and/or local electrical codes. Maximum allowable conductor size: 2x350 kcmil.

Conductor sizing in this manual is based on Table 310-16 of the 2008 National Electrical Code (NEC) with the following assertions:

- 90°C conductors (THHN) for 75°C termination
- 3 Current Carrying Conductors
- An ambient temperature of 30°C

If the ambient room temperature is greater than 30°C, larger conductors are to be selected in accordance with the correction factors of the NEC.

Equipment Grounding Conductors (EGC) are sized in accordance with NEC Article 250-122 and Table 250-122.

Grounding Electrode Conductors (GEC) are sized in accordance with NEC Article 250-66 and Table 250-66.

The conductor sizes are recommendations for maximum configurations. Even if the load is less than the maximum rating, Schneider Electric recommends to plan for future load increases. If the system is operated at a lower load than its rating and it is desired to supply the system with a lower rated breaker and smaller conductors, conductor capacities are to be selected in accordance with the NEC. The transformer inrush must be taken into account when sizing conductors.

		208 V : 208 V	480 V : 208 V	600 V : 208 V	Maintenance bypass cabinet or PDU without transformer ¹¹
Input (phase and neutral)	Copper	(2) ¹² 4/0	4/0	2/0	(2) 4/0
	Aluminum	(2) ¹² 300 kcmil	300 kcmil	4/0	(2) 300 kcmil
Grounding Electrode Conductor (GEC)	Copper	2 AWG			NA
	Aluminum	1/0			NA
Equipment Grounding Conductor (EGC)	Copper	2 AWG	4 AWG	6 AWG	2 AWG
	Aluminum	1/0	2 AWG	4 AWG	1/0
Output	Supplied with power distribution modules except for maintenance bypass				
Subfeed output	Copper	(2) 2/0 Phase and Neutral, 4 AWG EGC, GEC not required ¹³			
	Aluminum	(2) 4/0 Phase and Neutral, 2 AWG EGC, GEC not required ¹³			

Batteries

Battery Input	
Nominal voltage (VDC)	2 x 192
Connection	BAT+, CT, BAT-
Nominal battery discharge ¹⁴ (A)	276
Maximal battery discharge ¹⁵ (A)	344
End of discharge voltage	1.6-1.75 V/cell (automatic, depending on load)
Ah rating	Unlimited
Nominal output charge current (A)	52

11. The PDU without a transformer requires a neutral and does not require GEC.

12. Two conductors per phase and neutral (when neutral is required)

13. Subfeed is required to have two conductors per phase and neutral for full output due to limited wire bend space.

14. Based on rated load and nominal battery voltage (2.0 V/cell)

15. Based on rated load at the end of the discharge (1.6 V/cell)

Physical

Weights and Dimensions

Cabinets

Cabinet	Weight kg (lbs)	Height mm (in)	Width mm (in)	Depth mm (in)
100 kW UPS (SYCF100KF)	341 (752)	2011 (79.1)	600 (23.6)	1070 (42.1)
Modular battery cabinet (SYCFXR9 and SYCFXR48)	345 (760)	1996 (78.5)	600 (23.6)	1070 (42.1)
PDU (PDPM100F6F-M, PDPM100G6F-M, PDPM100L6F-M)	816 (1800)	2004 (78.8)	600 (23.6)	1070 (42.1)
PDU (PDPM100F-M)	408 (900)	2004 (78.8)	600 (23.6)	1070 (42.1)
Maintenance Bypass Panel (SYMBP100F, SYMBP160H)	169 (371)	2004 (78.8)	300 (11.8)	1070 (42.1)
Side Car for Bottom Cable Entry (PDPM100SC)	138 (305)	2004 (78.8)	300 (11.8)	1070 (42.1)

Battery and Power Modules

Module	Weight kg (lbs)	Height mm (in)	Width mm (in)	Depth mm (in)
Battery Unit (SYBTU2-PLP, SYBTU2-PLPLL)	25.2 (55.3)	159 (6.2)	107 (4.2)	700 (27.5)
Power Module — 208 V (SYPM100KF2)	25.1 (55.1)	132 (5.2)	483 (19)	700 (27.5)

Shipping Weights and Dimensions

Cabinets

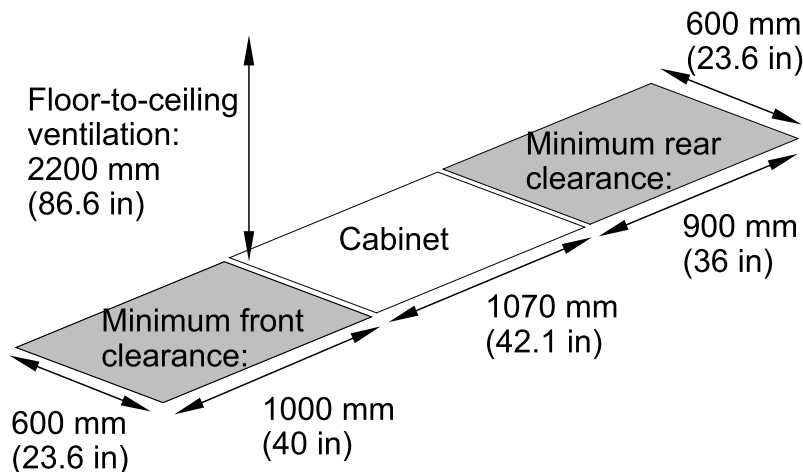
Cabinet	Weight kg (lbs)	Height mm (in)	Width mm (in)	Depth mm (in)
100 kW UPS (SYCF100KF)	386 (851)	2140 (84)	848 (33.3)	1210 (47.6)
Modular battery cabinet (SYCFXR9 and SYCFXR48)	379 (835)	2150 (84.6)	848 (33.3)	1210 (47.6)
PDU (PDPM100F6F-M, PDPM100G6F-M, PDPM100L6F-M)	862 (1900)	2150 (84.6)	1016 (40)	1210 (47.6)
PDU (PDPM100F-M)	454 (1000)	2150 (84.6)	1016 (40)	1210 (47.6)
Maintenance Bypass Panel (SYMBP100F, SYMBP160H)	189 (416)	2150 (84.6)	848 (33.3)	1210 (47.6)
Side Car for Bottom Cable Entry (PDPM100SC)	159 (350)	2150 (84.6)	848 (33.3)	1210 (47.6)

Modules

Cabinet	Weight kg (lbs)	Height mm (in)	Width mm (in)	Depth mm (in)
Battery Unit (SYBTU2-PLP, SYBTU2-PLPLL)	27 (59.2)	180 (7)	150 (5.9)	810 (31.89)
Power Module — 208 V (SYPM10KF2)	28.45 (61.7)	225 (8.8)	595 (23.4)	795 (31.3)

Clearance Symmetra PX 100 kW

NOTE: Clearance dimensions are published for airflow and service access only. Consult with the local safety codes and standards for additional requirements in your local area.



Environmental

Operating environment	0–40 °C (32–104 °F)
Operating relative humidity	0–95%, non-condensing
Operating elevation without derating	0–999.9 meters (0–3333 feet)
Storage temperature	–15–40 °C (5–104 °F)
Storage relative humidity	0–95%, non-condensing
Storage elevation	0–15000 meters (0–50000 feet)
Audible noise at 1 meter from surface of unit - at 100% load - at 70% load	67 dBA 60 dBA
UPS air flow at 0–100% load	162 CFM
Protection class	NEMA 1
Colour	Black

Heat Dissipation

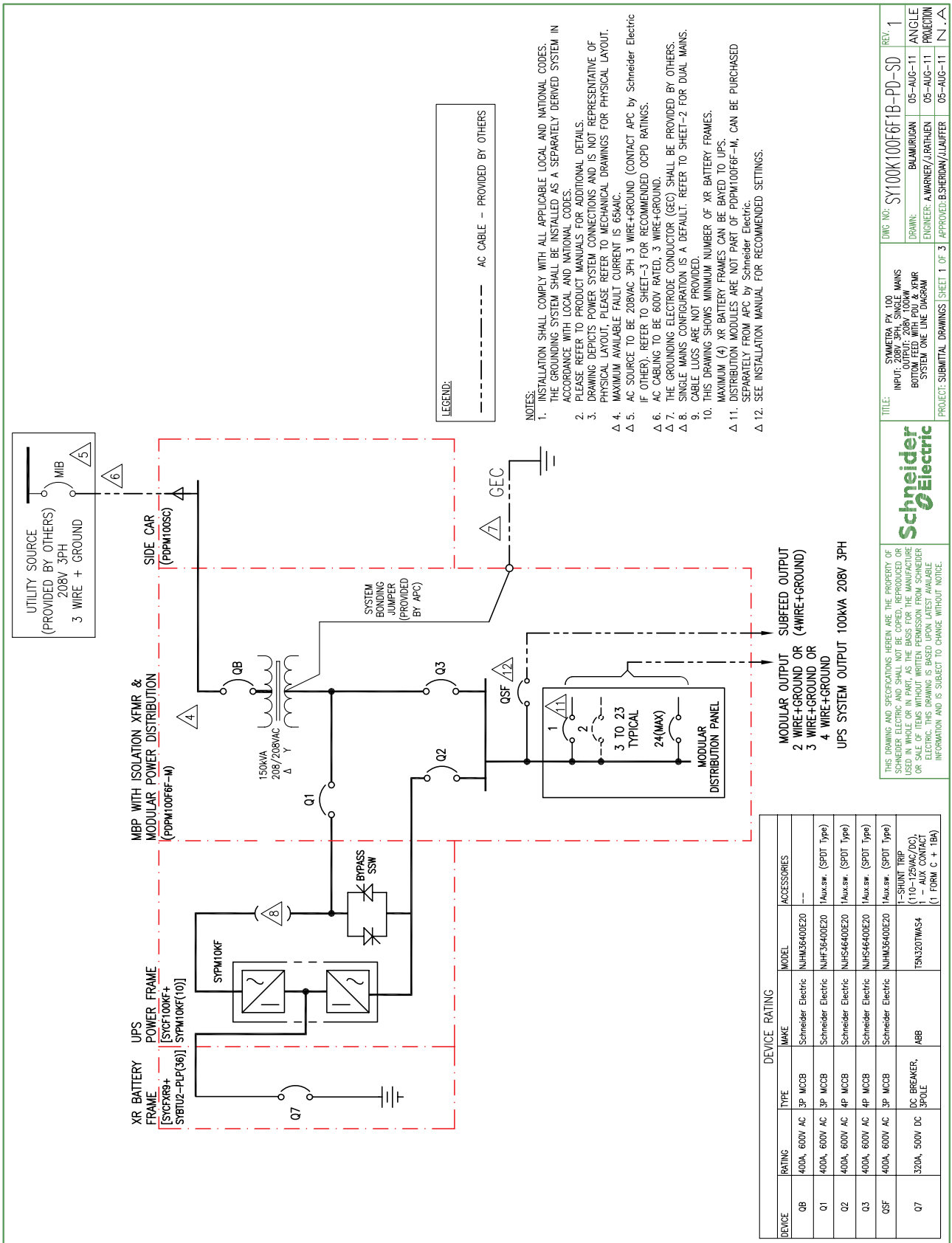
	Without PDU	With PDU			
	208 V	208 V: 208 V	480 V: 208 V	600 V: 208 V	208 V no transformer
Heat dissipation at 100% load and charging batteries (BTU/hr)	22,687	34,572	34,231	32,525	28,771

Drawings

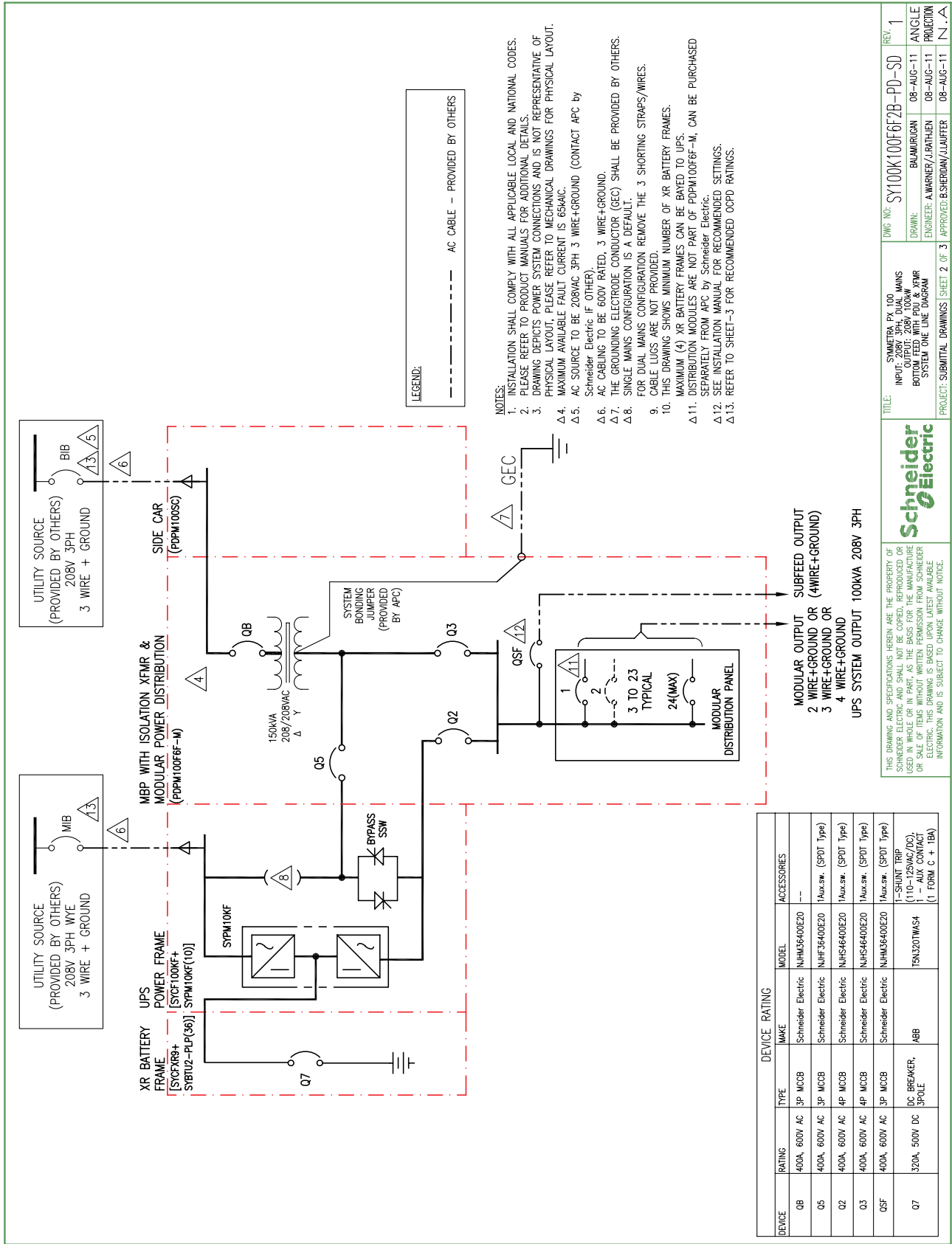
NOTE: A comprehensive set of drawings is available on the engineering website at engineer.apc.com.

NOTE: These drawings are for reference ONLY — subject to change without notice.

Symmetra PX 100 kW 208 V Single Mains Bottom Feed with PDU with Transformer



Symmetra PX 100 kW 208 V Dual Mains Bottom Feed with PDU with Transformer



THIS DRAWING AND SPECIFICATIONS HEREBY ARE THE PROPERTY OF SCHNEIDER ELECTRIC. IT IS TO BE USED IN WHOLE OR IN PART AS THE BASIS FOR THE MANUFACTURE OR SALE OF ITEMS WITHOUT WRITTEN PERMISSION FROM SCHNEIDER ELECTRIC. THIS DRAWING IS BASED UPON LATEST AVAILABLE INFORMATION AND IS SUBJECT TO CHANGE WITHOUT NOTICE.

Schneider Electric

SYMMETRA PX 100
INPUT: 208V 3PH 3 WIRE MAINS
OUTPUT: 208V 100kW
BOTTOM FEED WITH PDU & XFMR
SYSTEM ONE LINE DIAGRAM

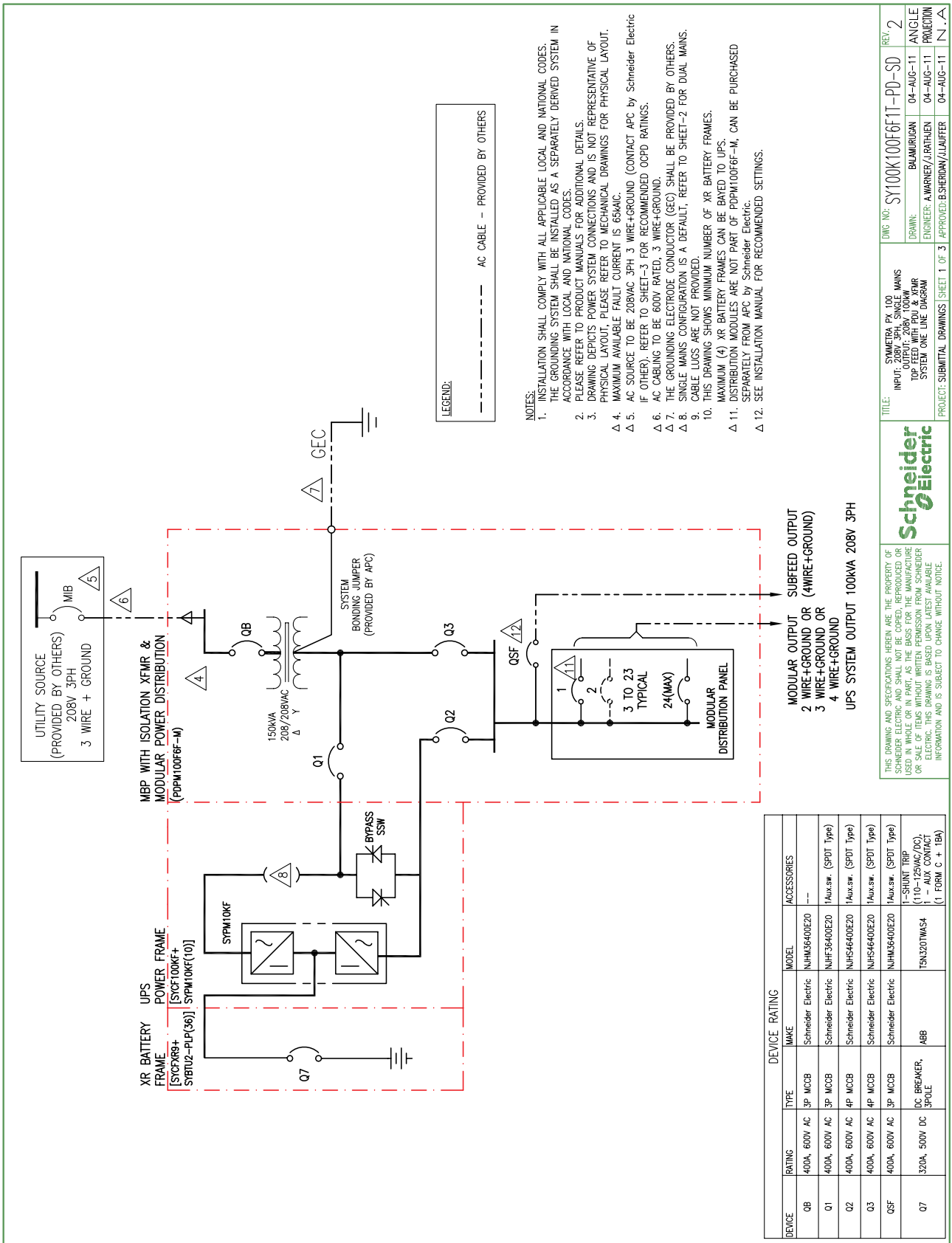
OWG NO: SY100K100F62B-PD-SD REV: 1

DRAWN: BALMURIGIAN 08-AUG-11 ANGLE PROTECTION

ENGINEER: A.WARNER/J.LATHEN 08-AUG-11

PROJECT: SUBMITTAL DRAWINGS SHEET 2 OF 3 APPROVED: B.SHERIDAN/J.LAUFER 08-AUG-11 N.A.

Symmetra PX 100 kW 208 V Single Mains Top Feed with PDU with Transformer



Schneider Electric

THE DRAWING AND SPECIFICATIONS HEREIN ARE THE PROPERTY OF SCHNEIDER ELECTRIC AND SHALL NOT BE COPIED, REPRODUCED OR USED IN WHOLE OR IN PART AS THE BASIS FOR THE MANUFACTURE OR SALE OF ITEMS WITHOUT WRITTEN PERMISSION FROM SCHNEIDER ELECTRIC. THIS DRAWING IS BASED UPON LATEST AVAILABLE INFORMATION AND IS SUBJECT TO CHANGE WITHOUT NOTICE.

PROJECT: SUBMITTAL DRAWINGS SHEET 1 OF 3

ENGINEER: A.WARNER/J.RATHEN

DRAWN: B.MURUGAN

DATE: 04-AUG-11

REV: 2

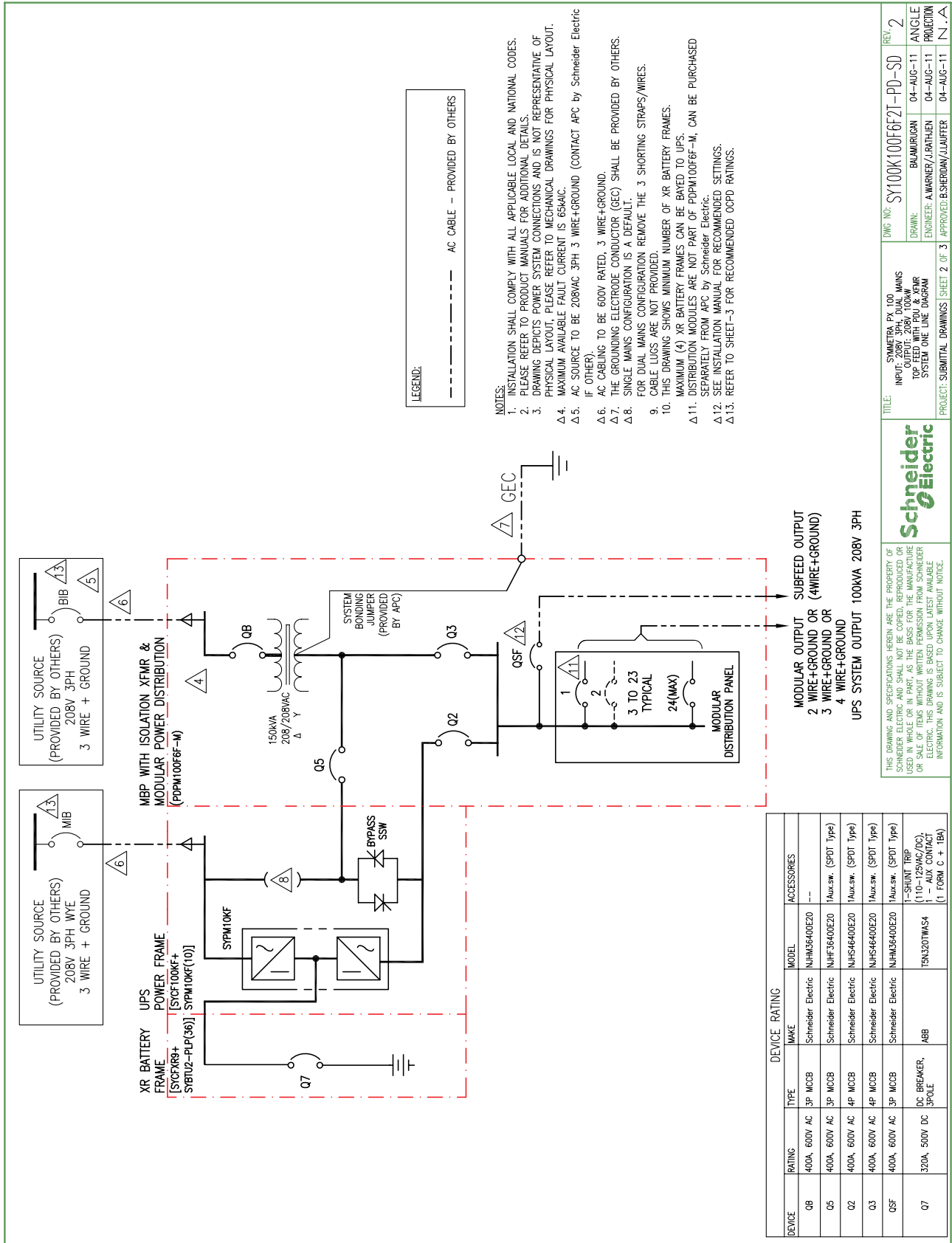
ANGLE PROJECTION: N.A.

UWG NO.: SY100K100F6F11-PD-SD

TITLE: SYMMETRA PX 100 INPUT: 208V 3PH SINGLE MAINS OUTPUT: 208V 100KW TOP FEED WITH PDU & XFMR SYSTEM ONE LINE DIAGRAM

DEVICE	RATING	TYPE	MAKE	MODEL	ACCESSORIES
QB	400A, 600V AC	3P MCCB	Schneider Electric	NHM6S400E20	--
Q1	400A, 600V AC	3P MCCB	Schneider Electric	NHFS36400E20	1Aux.sw. (SPDT Type)
Q2	400A, 600V AC	4P MCCB	Schneider Electric	NHSA46400E20	1Aux.sw. (SPDT Type)
Q3	400A, 600V AC	4P MCCB	Schneider Electric	NHSA6400E20	1Aux.sw. (SPDT Type)
QSF	400A, 600V AC	3P MCCB	Schneider Electric	NHM6S400E20	1Aux.sw. (SPDT Type)
Q7	320A, 500V DC	DC BREAKER, 3POLE	ABB	TBN207M4S4	1-SHUNT TRIP (110-125VAC/DC) 1 - AUX CONTACT (1 FORM C + 1BA)

Symmetra PX 100 kW 208 V Dual Mains Top Feed with PDU with Transformer



REV. 2	ANGLE PROJECTION	04-AUG-11	04-AUG-11
DR. BAUMURIGAN	ENGINEER: A.WARNER/J.RATHEN	04-AUG-11	04-AUG-11
APPROVED: B.SHERIDAN/L.LAUFER	APPROVED: B.SHERIDAN/L.LAUFER	04-AUG-11	04-AUG-11

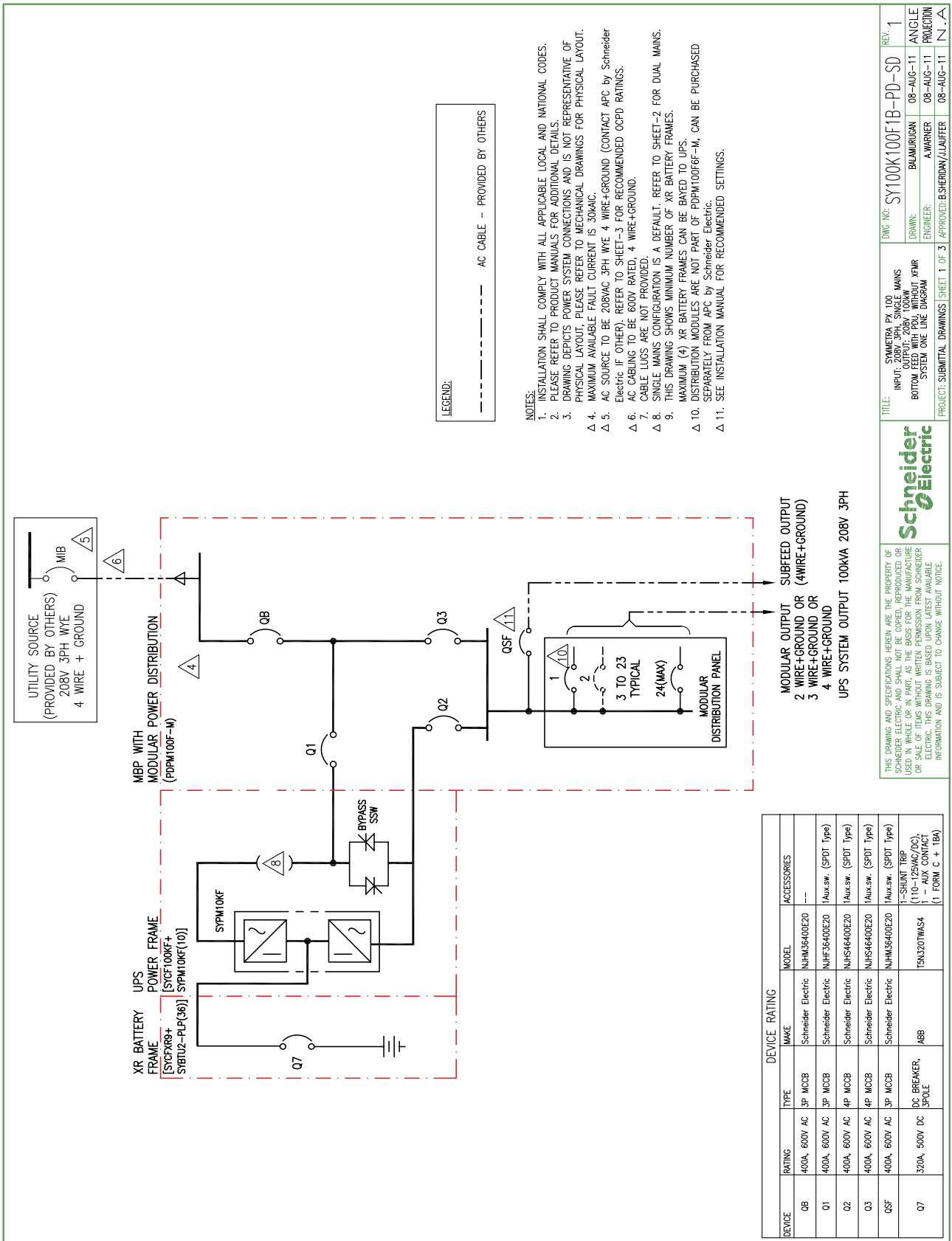
PROJECT: SUBMITTAL DRAWINGS | SHEET 2 OF 3

TITLE: SYMMETRA PX 100 UPS SYSTEM WITH PDU & XFMR TOP FEED WITH PDU & XFMR SYSTEM ONE LINE DIAGRAM

DWG NO: SY100K100F6F2I-PD-SD



Symmetra PX 100 kW 208 V Single Mains Bottom Feed with PDU without Transformer



THE DRAWINGS AND SPECIFICATIONS HEREBY ARE THE PROPERTY OF SCHNEIDER ELECTRIC AND SHALL NOT BE COPIED, REPRODUCED OR USED IN WHOLE OR IN PART AS THE BASIS FOR THE MANUFACTURE OR SALE OF ITEMS WITHOUT WRITTEN PERMISSION FROM SCHNEIDER ELECTRIC. THIS DRAWING IS BASED UPON LATEST AVAILABLE INFORMATION AND IS SUBJECT TO CHANGE WITHOUT NOTICE.

OWG NO: SY100K100F1B-PD-SD REV. 1

TITLE: SYMMETRA PX 100 INPUT: 208V 3PH SINGLE MAINS OUTPUT: 208V 100kW BOTTOM FEED WITH PDU WITHOUT XEHR SYSTEM ONE LINE DIAGRAM

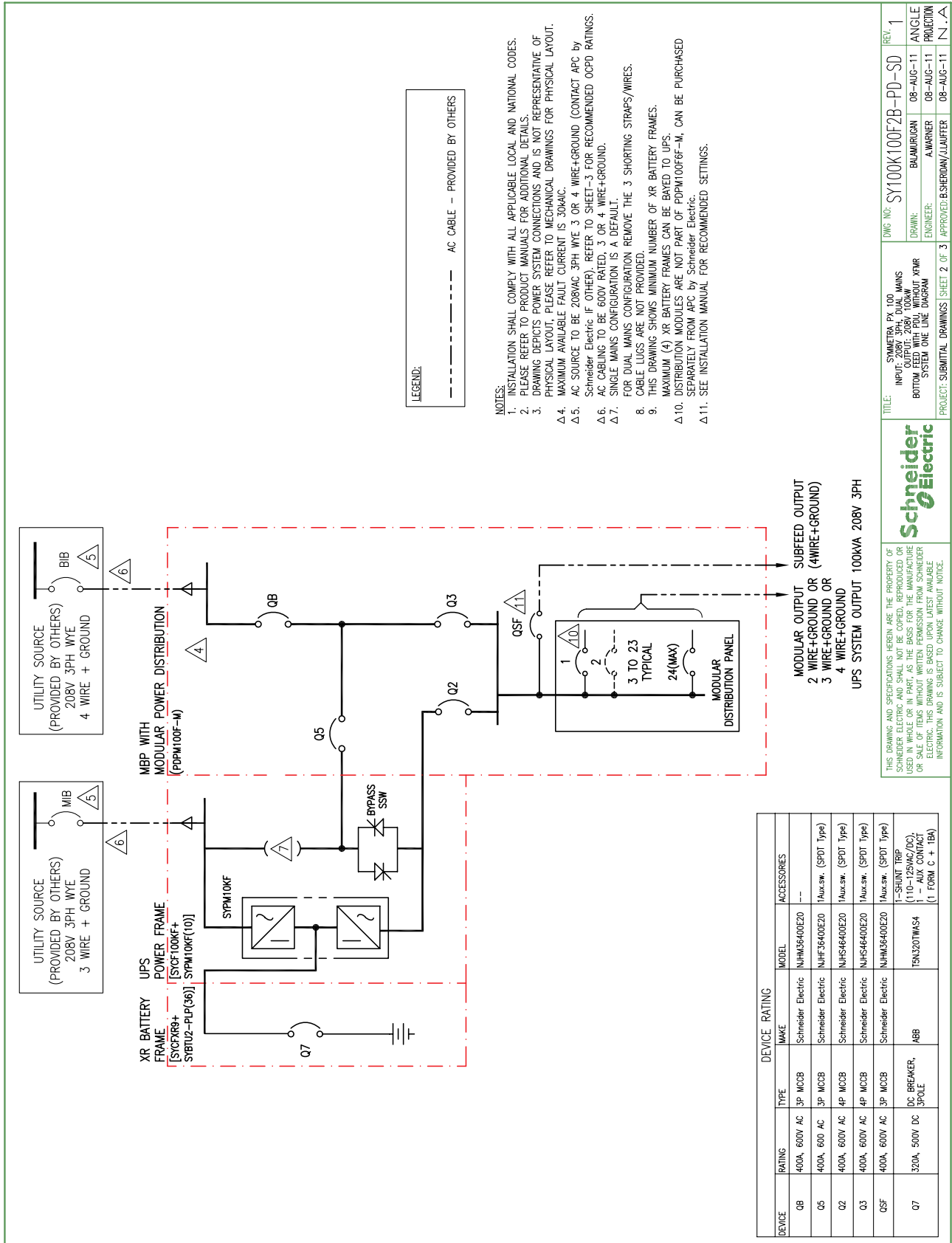
DRAWN: BALMURICAN 08-AUG-11
ENGINEER: A.WARNER 08-AUG-11
PROJECT: SUBMITTAL DRAWINGS SHEET 1 OF 3
APPROVER: B.SHERIDAN/LLAUFER 08-AUG-11

ANGLE PROJECTION: N.A.

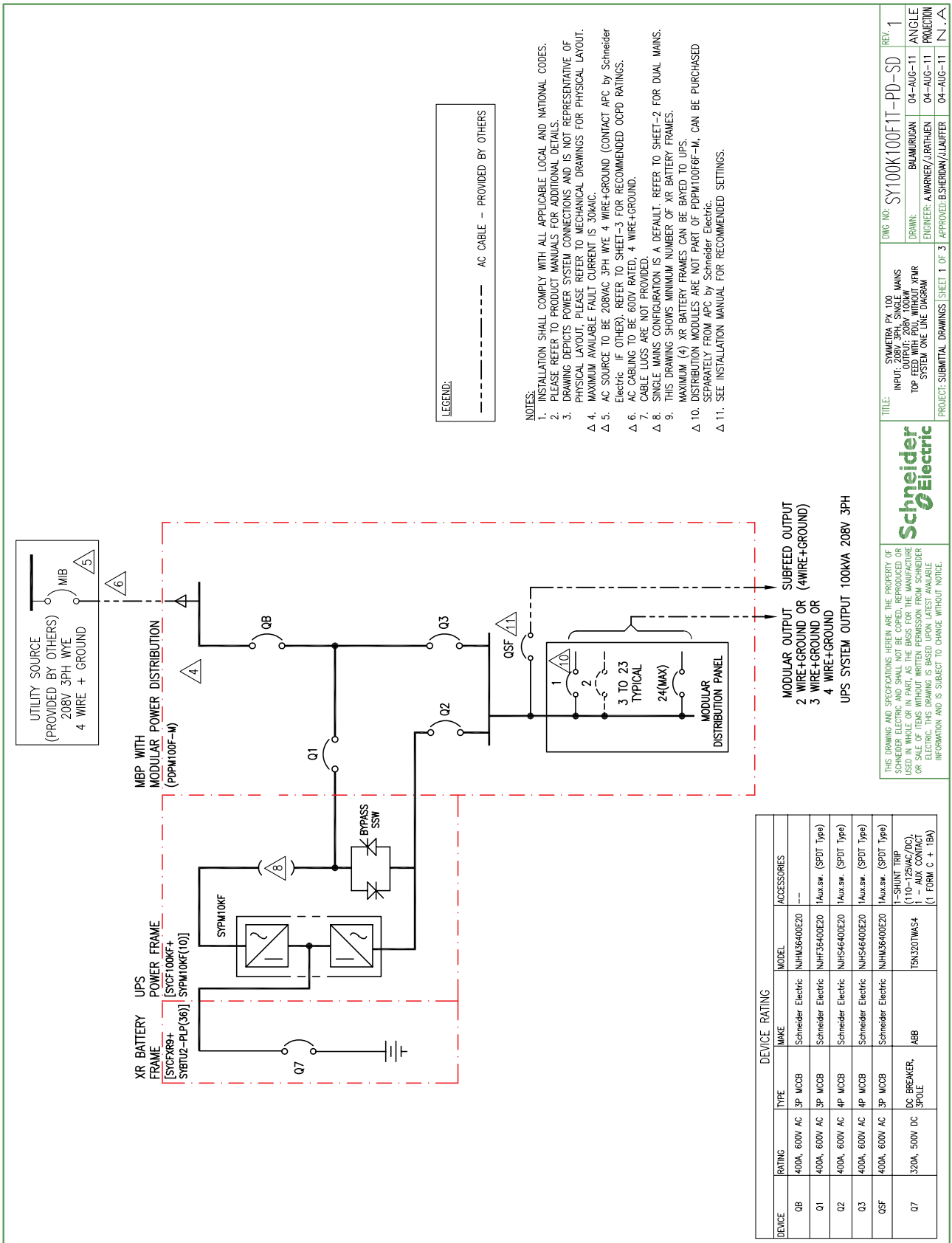
Schneider Electric

DEVICE	RATING	TYPE	MAKE	MODEL	ACCESSORIES
Q8	400A, 600V AC	3P MCCB	Schneider Electric	NuHS640E20	---
Q1	400A, 600V AC	3P MCCB	Schneider Electric	NuHS3640E20	1Aux.sw. (SPDT Type)
Q2	400A, 600V AC	4P MCCB	Schneider Electric	NuHS4640E20	1Aux.sw. (SPDT Type)
Q3	400A, 600V AC	4P MCCB	Schneider Electric	NuHS4640E20	1Aux.sw. (SPDT Type)
Q5F	400A, 600V AC	3P MCCB	Schneider Electric	NuHS640E20	1Aux.sw. (SPDT Type)
Q7	320A, 500V DC	DC BREAKER, SPOLE	ABB	TBN320TMS4	1 - SHUNT TRIP (110-125VAC/DC), 1 - AUX CONTACT (1 FORM C + 1BN)

Symmetra PX 100 kW 208 V Dual Mains Bottom Feed with PDU without Transformer



Symmetra PX 100 kW 208 V kW Single Mains Top Feed with PDU without Transformer



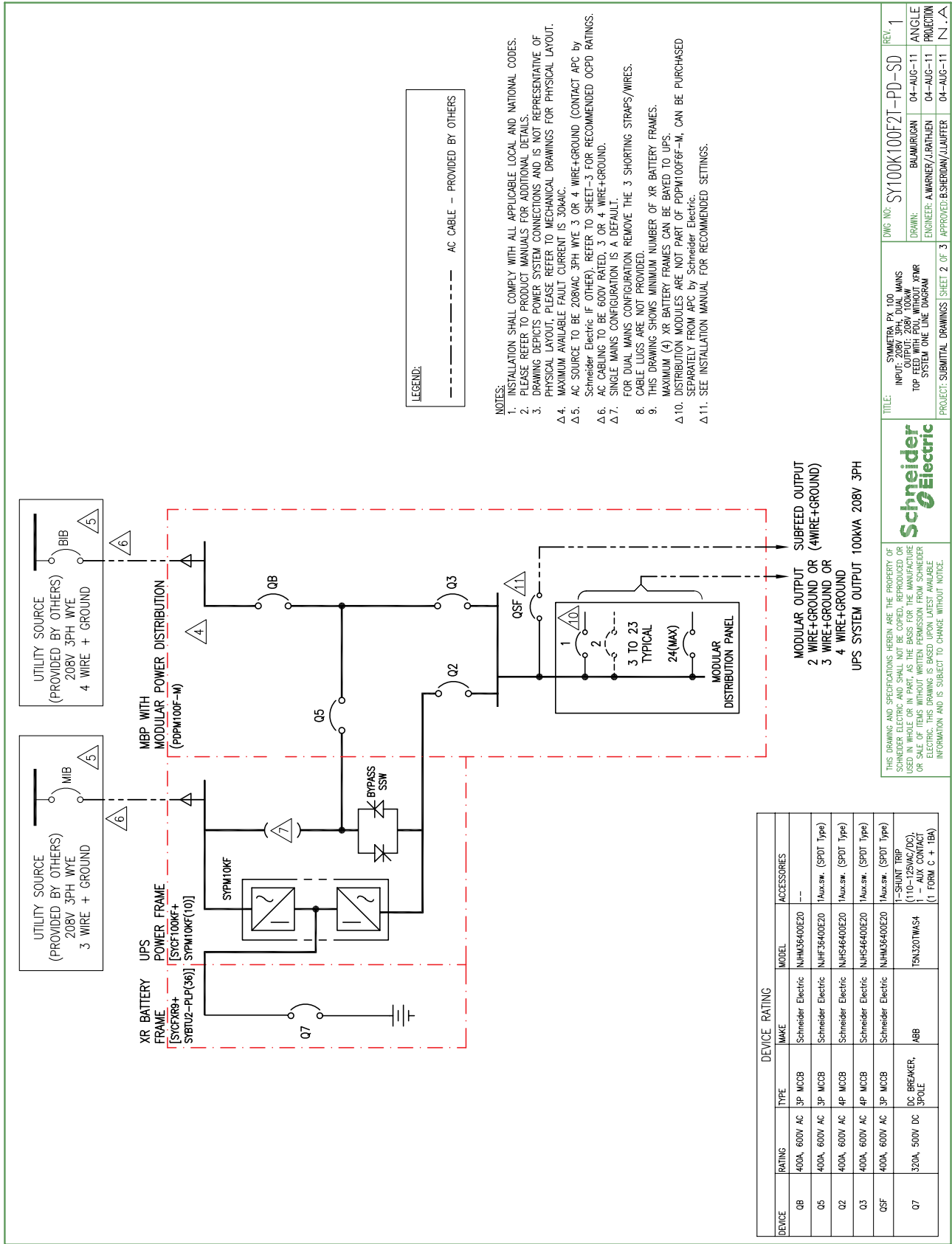
OWG NO:	SY100K100FIT-PD-SD	REV:	1
TITLE:	Symmetra PX 100 INPUT: 208V 3PH SINGLE MAINS OUTPUT: 208V 100kW TOP FEED WITH PDU WITHOUT XPMR SYSTEM ONE LINE DIAGRAM	DATE:	04-AUG-11
ENGINEER:	A.WARNER/J.RATHEN	PROJECT:	SUBMITTAL DRAWINGS SHEET 1 OF 3
APPROVER:	B.SHERIDAN/J.LAUFFER	ANGLE PROJECTION:	N.A.

Schneider Electric

THE DRAWING AND SPECIFICATIONS HEREBY ARE THE PROPERTY OF SCHNEIDER ELECTRIC AND SHALL NOT BE COPIED, REPRODUCED OR USED IN WHOLE OR IN PART AS THE BASIS FOR THE MANUFACTURE OR SALE OF ITEMS WITHOUT WRITTEN PERMISSION FROM SCHNEIDER ELECTRIC. THIS DRAWING IS BASED UPON LATEST AVAILABLE INFORMATION AND IS SUBJECT TO CHANGE WITHOUT NOTICE.

DEVICE	RATING	TYPE	MAKE	MODEL	ACCESSORIES
QB	400A, 600V AC	3P MCCB	Schneider Electric	NJHM36400E20	--
Q1	400A, 600V AC	3P MCCB	Schneider Electric	NuHS36400E20	1Aux.sw. (SPDT Type)
Q2	400A, 600V AC	4P MCCB	Schneider Electric	NuHS46400E20	1Aux.sw. (SPDT Type)
Q3	400A, 600V AC	4P MCCB	Schneider Electric	NuHS46400E20	1Aux.sw. (SPDT Type)
Q5F	400A, 600V AC	3P MCCB	Schneider Electric	NJHM36400E20	1Aux.sw. (SPDT Type)
Q7	320A, 500V DC	DC BREAKER, SPOLE	ABB	TBN2207M4S4	1-SHUNT TRIP (110-125VAC/DC) 1 - AUX CONTACT (1 FORM C + 1BA)

Symmetra PX 100 kW 208 V Dual Mains Top Feed with PDU without Transformer



LEGEND:
 - - - - - AC CABLE - PROVIDED BY OTHERS

- NOTES:
1. INSTALLATION SHALL COMPLY WITH ALL APPLICABLE LOCAL AND NATIONAL CODES. PLEASE REFER TO PRODUCT MANUALS FOR ADDITIONAL DETAILS.
 2. DRAWING DEPICTS POWER SYSTEM CONNECTIONS AND IS NOT REPRESENTATIVE OF PHYSICAL LAYOUT. PLEASE REFER TO MECHANICAL DRAWINGS FOR PHYSICAL LAYOUT.
 - Δ 4. MAXIMUM AVAILABLE FAULT CURRENT IS 30KAIC.
 - Δ 5. AC SOURCE TO BE 208VAC 3PH WYE 3 OR 4 WIRE+GROUND (CONTACT APC BY Schneider Electric IF OTHER). REFER TO SHEET-3 FOR RECOMMENDED OCPD RATINGS.
 - Δ 6. AC CABLE TO BE 600V RATED, 3 OR 4 WIRE+GROUND.
 - Δ 7. SINGLE MAINS CONFIGURATION IS A DEFAULT.
 8. FOR DUAL MAINS CONFIGURATION REMOVE THE 3 SHORTING STRAPS/WIRES. CABLE LUGS ARE NOT PROVIDED.
 9. THIS DRAWING SHOWS MINIMUM NUMBER OF XR BATTERY FRAMES.
 - MAXIMUM (4) XR BATTERY FRAMES CAN BE BAYED TO UPS.
 - Δ 10. DISTRIBUTION MODULES ARE NOT PART OF PDPM100F6-M. CAN BE PURCHASED SEPARATELY FROM APC BY Schneider Electric.
 - Δ 11. SEE INSTALLATION MANUAL FOR RECOMMENDED SETTINGS.

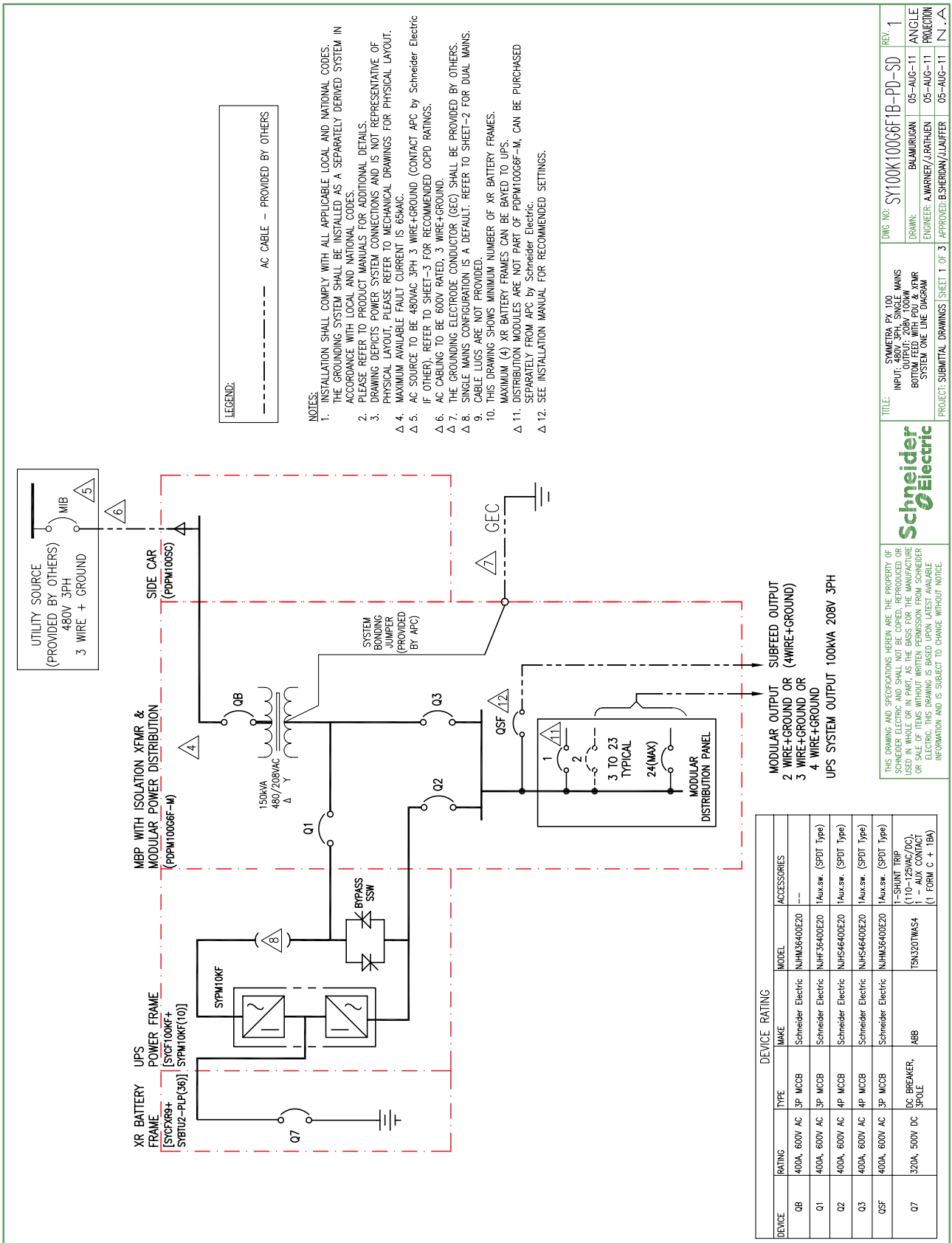
DEVICE	RATING	TYPE	NAME	MODEL	ACCESSORIES
Q1	400A, 600V AC	3P MCCB	Schneider Electric	NJHJ3640E20	--
Q5	400A, 600V AC	3P MCCB	Schneider Electric	NHFS3640E20	1Aux.sw. (SPDT Type)
Q2	400A, 600V AC	4P MCCB	Schneider Electric	NHFS4640E20	1Aux.sw. (SPDT Type)
Q3	400A, 600V AC	4P MCCB	Schneider Electric	NHFS4640E20	1Aux.sw. (SPDT Type)
QSF	400A, 600V AC	3P MCCB	Schneider Electric	NJHJ3640E20	1Aux.sw. (SPDT Type)
Q7	320A, 500V DC	DC BREAKER, 3POLE	ABB	TBN320TWASH	1-SHUNT TRIP (110-125VAC/DC) 1 - AUX CONTACT (1 FORM C + 1BA)

THIS DRAWING AND SPECIFICATIONS HEREBY ARE THE PROPERTY OF SCHNEIDER ELECTRIC. IT IS TO BE USED IN WHOLE OR IN PART AS THE BASIS FOR THE MANUFACTURE OR SALE OF ITEMS WITHOUT WRITTEN PERMISSION FROM SCHNEIDER ELECTRIC. THIS DRAWING IS BASED UPON LATEST AVAILABLE INFORMATION AND IS SUBJECT TO CHANGE WITHOUT NOTICE.

Schneider Electric

TITLE: SYMMETRA PX 100 kW 208V DUAL MAINS TOP FEED WITH PDU, WITHOUT XRPM SYSTEM ONE LINE DIAGRAM
 DWG NO: SY100K100F2T-PD-SD REV: 1
 DRAWN: BALAJIRAGAN 04-AUG-11 ANGLE PROJECTION
 ENGINEER: A.WARNER/J.RATHEN 04-AUG-11
 PROJECT: SUBMITTAL DRAWINGS SHEET 2 OF 3 APPROVED: B.SHERIDAN/L.LAUFER 04-AUG-11 N.A.

Symmetra PX 100 kW 480 V Single Mains Bottom Feed with PDU with Transformer



SCHEIDER Electric

THE DRAWING AND SPECIFICATIONS HEREBY ARE THE PROPERTY OF SCHEIDER ELECTRIC AND SHALL NOT BE COPIED, REPRODUCED OR USED IN WHOLE OR IN PART AS THE BASIS FOR THE MANUFACTURE OR SALE OF ITEMS WITHOUT WRITTEN PERMISSION FROM SCHEIDER ELECTRIC. THIS DRAWING IS BASED UPON LATEST AVAILABLE INFORMATION AND IS SUBJECT TO CHANGE WITHOUT NOTICE.

PROJECT: SUBMITTAL DRAWINGS SHEET 1 OF 3

ENGINEER: A.WARNER/J.RATHEN
DRAWN: B.MAJURICAN

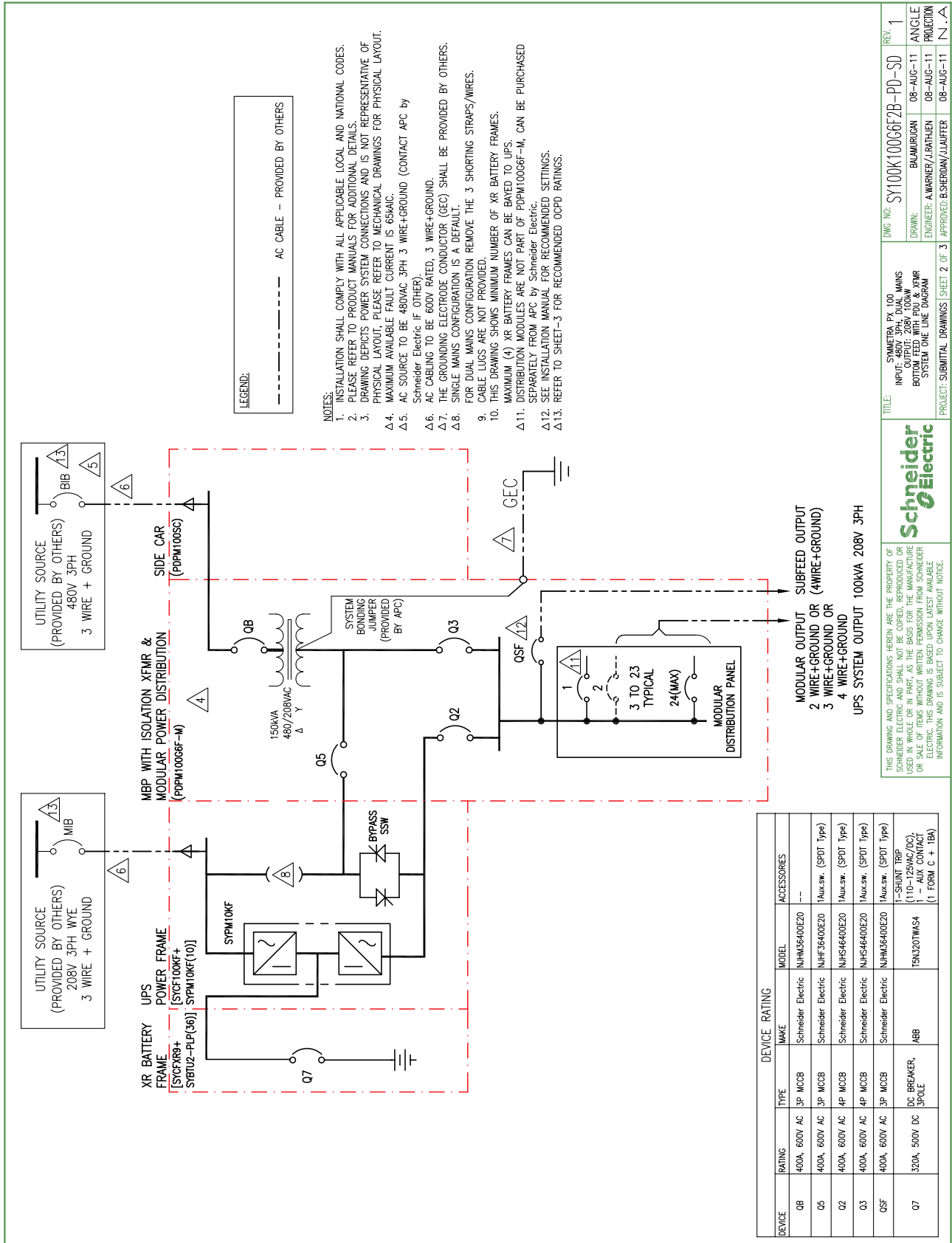
DATE: 05-AUG-11
REV: 1

PROJECT: SYMMETRA PX 100
INPUT: 480V 3PH SINGLE MAINS
OUTPUT: 208V 100kW
BOTTOM FEED WITH PDU & XFMR
SYSTEM ONE LINE DIAGRAM

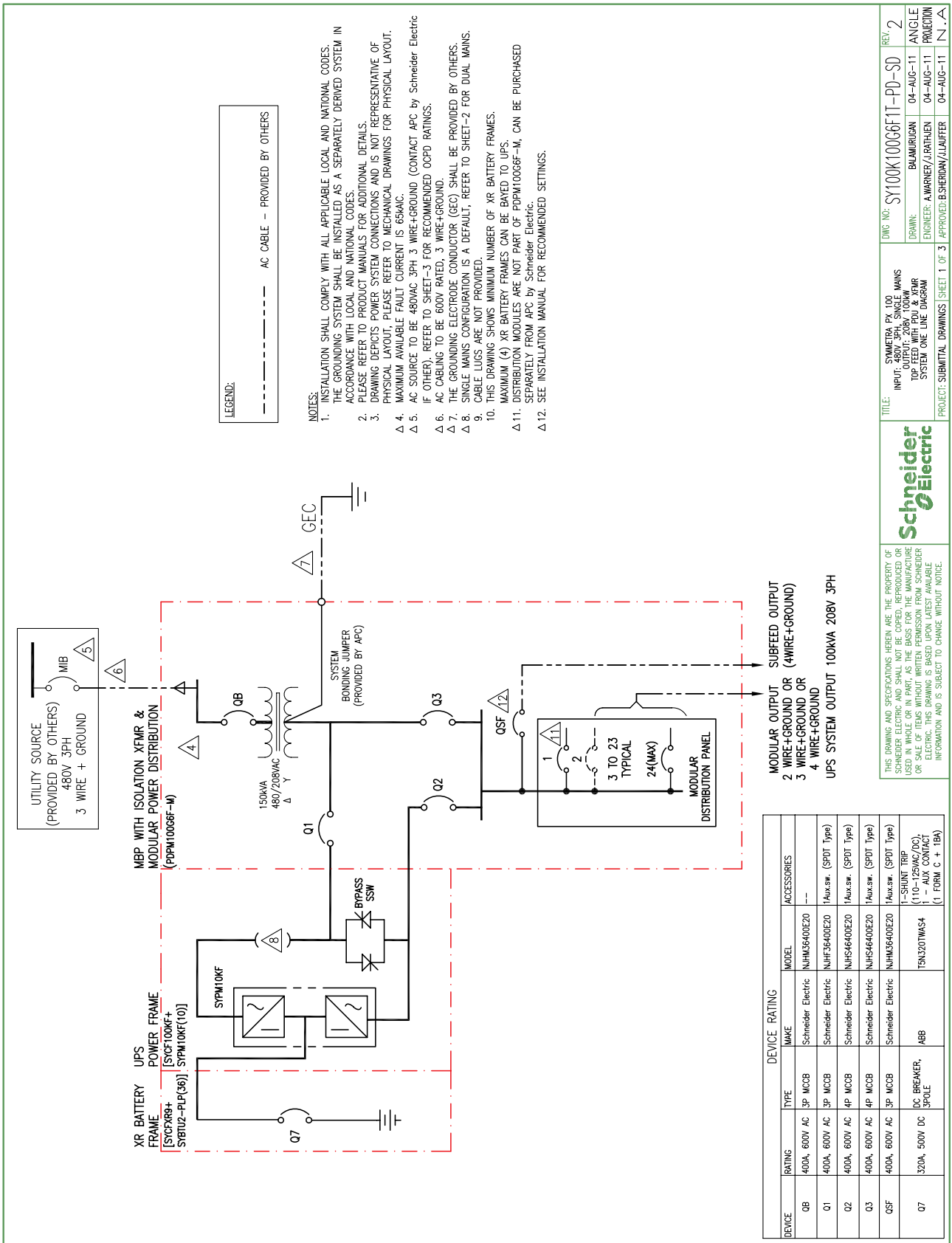
DATE: 05-AUG-11
ANGLE: N/A
PROJECTION: N/A

DEVICE		RATING		MAKE		MODEL		ACCESSORIES	
QB	400A, 600V AC	3P	MCCB	Schneider Electric	NJHM3640E20	--	--	--	--
Q1	400A, 600V AC	3P	MCCB	Schneider Electric	NuHS4640E20	1Aux.sw.	(SPDT Type)	1Aux.sw.	(SPDT Type)
Q2	400A, 600V AC	4P	MCCB	Schneider Electric	NuHS4640E20	1Aux.sw.	(SPDT Type)	1Aux.sw.	(SPDT Type)
Q3	400A, 600V AC	4P	MCCB	Schneider Electric	NuHS4640E20	1Aux.sw.	(SPDT Type)	1Aux.sw.	(SPDT Type)
QSF	400A, 600V AC	3P	MCCB	Schneider Electric	NJHM3640E20	1Aux.sw.	(SPDT Type)	1-SHUNT TRIP	(110-125VAC/DC)
Q7	320A, 500V DC	DC BREAKER, 3POLE		ABB	TBN2207M4S4	1	AUX CONTACT	1	FORM C + 1BA

Symmetra PX 100 kW 480 V Dual Mains Bottom Feed with PDU with Transformer



Symmetra PX 100 kW 480 V Single Mains Top Feed with PDU with Transformer



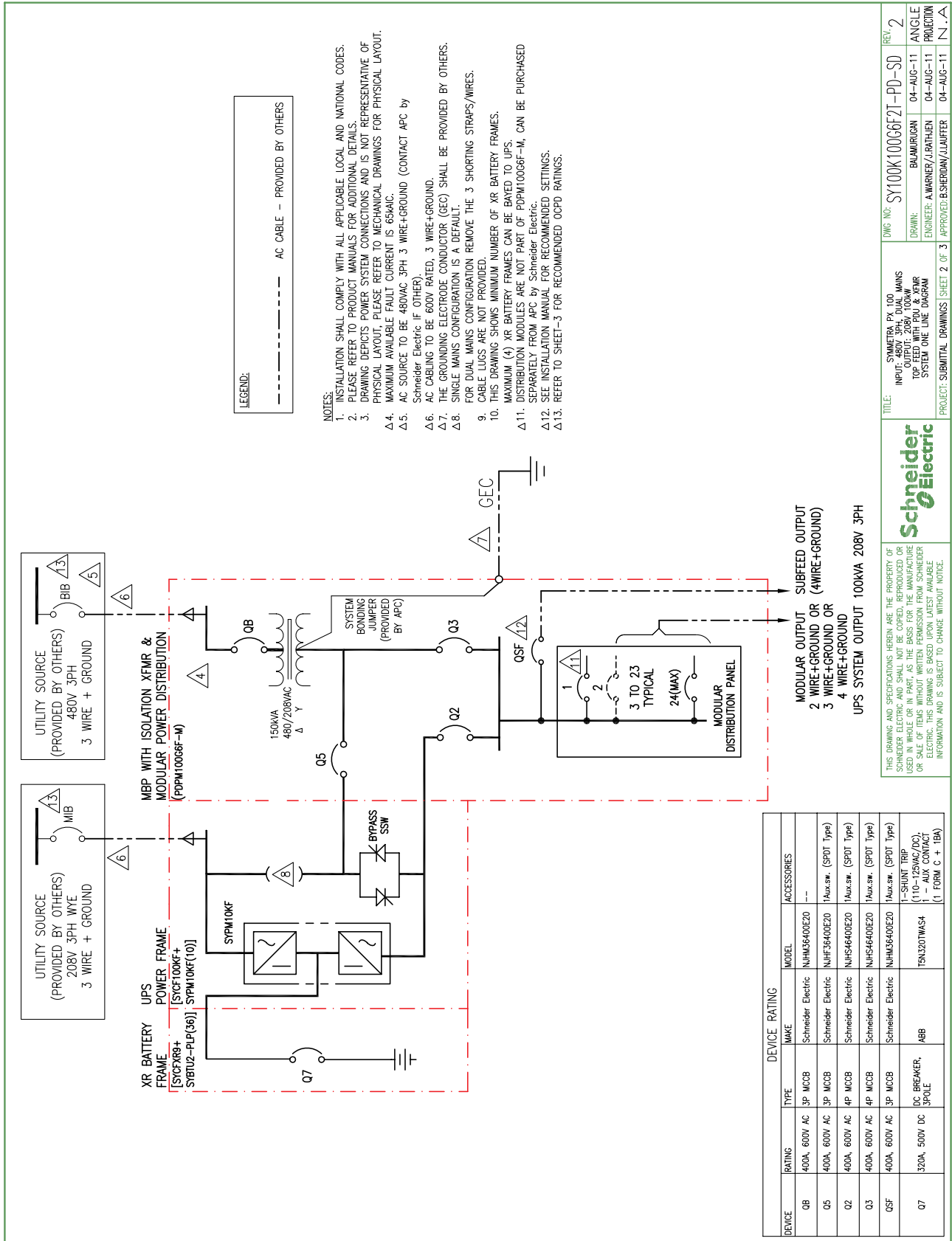
OWG NO: SY100K100G6F11-PD-SD REV: 2
 TITLE: SYMMETRA PX 100 INPUT: 480V 3PH SINGLE MAINS TOP FEED WITH PDU & XFMR SYSTEM ONE LINE DIAGRAM
 DRAWN: BANAJIRUGAN
 ENGINEER: A.WARNER/J.RATHNEN
 PROJECT: SUBMITTAL DRAWINGS SHEET 1 OF 3 APPROVER: B.SHERIDAN/J.LAUFFER
 04-AUG-11
 04-AUG-11
 N/A



THE DRAWING AND SPECIFICATIONS HEREBY ARE THE PROPERTY OF SCHNEIDER ELECTRIC AND SHALL NOT BE COPIED, REPRODUCED, OR USED IN WHOLE OR IN PART AS THE BASIS FOR THE MANUFACTURE OR SALE OF ITEMS WITHOUT WRITTEN PERMISSION FROM SCHNEIDER ELECTRIC. THIS DRAWING IS BASED UPON LATEST AVAILABLE INFORMATION AND IS SUBJECT TO CHANGE WITHOUT NOTICE.

DEVICE RATING			
DEVICE	RATING	MAKE	ACCESSORIES
QB	400A, 600V AC 3P MCCB	Schneider Electric NHHS6400E20	---
O1	400A, 600V AC 3P MCCB	Schneider Electric NHFS36400E20	1Aux.sw. (SPDT Type)
O2	400A, 600V AC 4P MCCB	Schneider Electric NHHS46400E20	1Aux.sw. (SPDT Type)
O3	400A, 600V AC 4P MCCB	Schneider Electric NHHS46400E20	1Aux.sw. (SPDT Type)
QSF	400A, 600V AC 3P MCCB	Schneider Electric NHHS36400E20	1Aux.sw. (SPDT Type)
O7	320A, 500V DC DC BREAKER, SPOLE	ABB TBN320THMS4	1 - SHUNT TRIP (110-125VAC/AC) 1 - AUX CONTACT (1 FORM C + 1BA)

Symmetra PX 100 kW 480 V Dual Mains Top Feed with PDU with Transformer



Schneider Electric

PROJECT: SUBMITTAL DRAWINGS | SHEET 2 OF 3 | APPROVED: B.SHERIDAN/L.LAUFER | 04-AUG-11 | N.A.

ENGINEER: A.WARNER/J.RATHEN | 04-AUG-11

DRAWN: B.MURUGIAN | 04-AUG-11

REV: 2

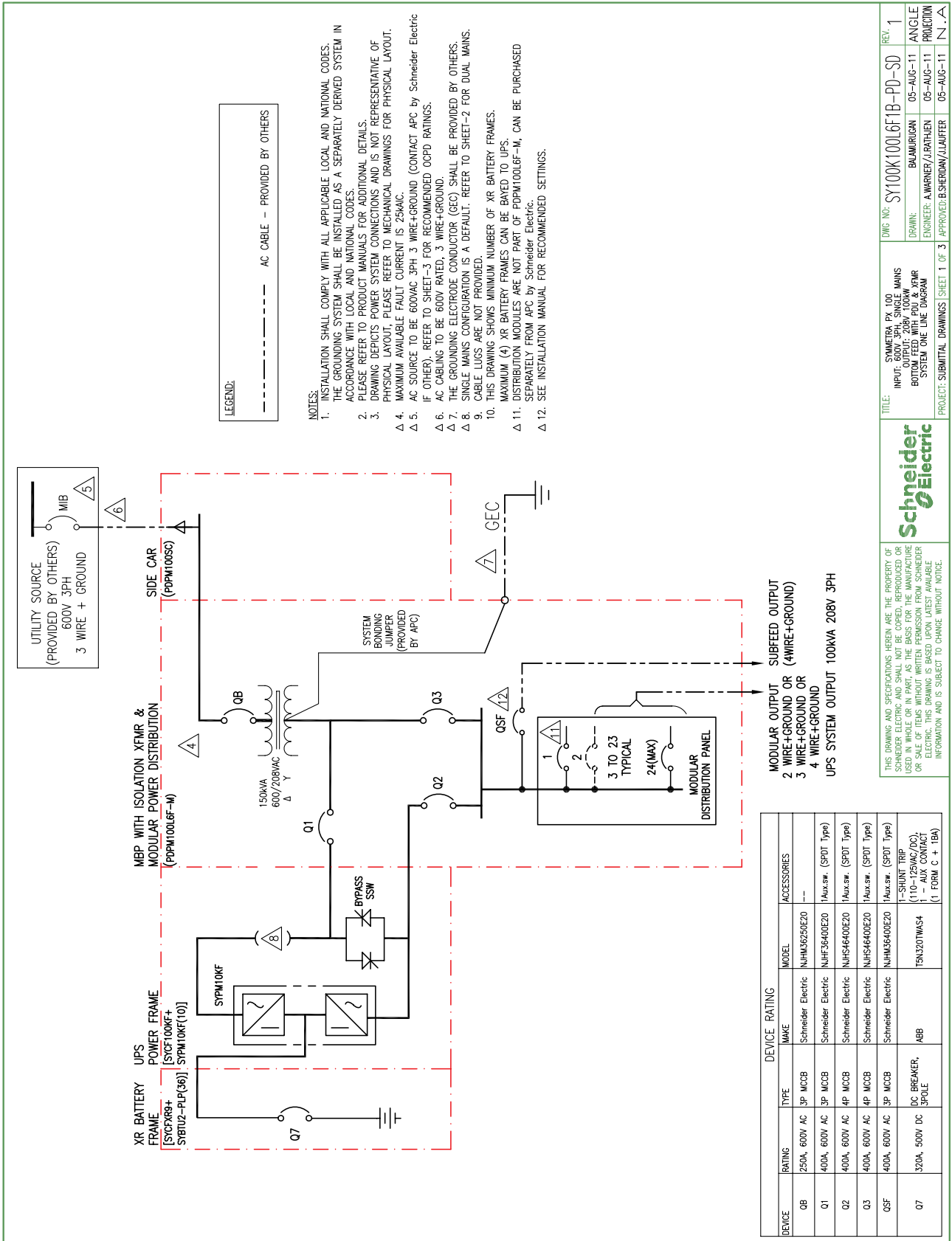
SYMMETRA PX 100
 INPUT: 480V 3PH 3 WIRE MAINS
 OUTPUT: 208V 100kW
 TOP FEED WITH PDU & XFMR
 SYSTEM ONE LINE DIAGRAM

OWG NO: SY100K100G6F2I-PD-SD

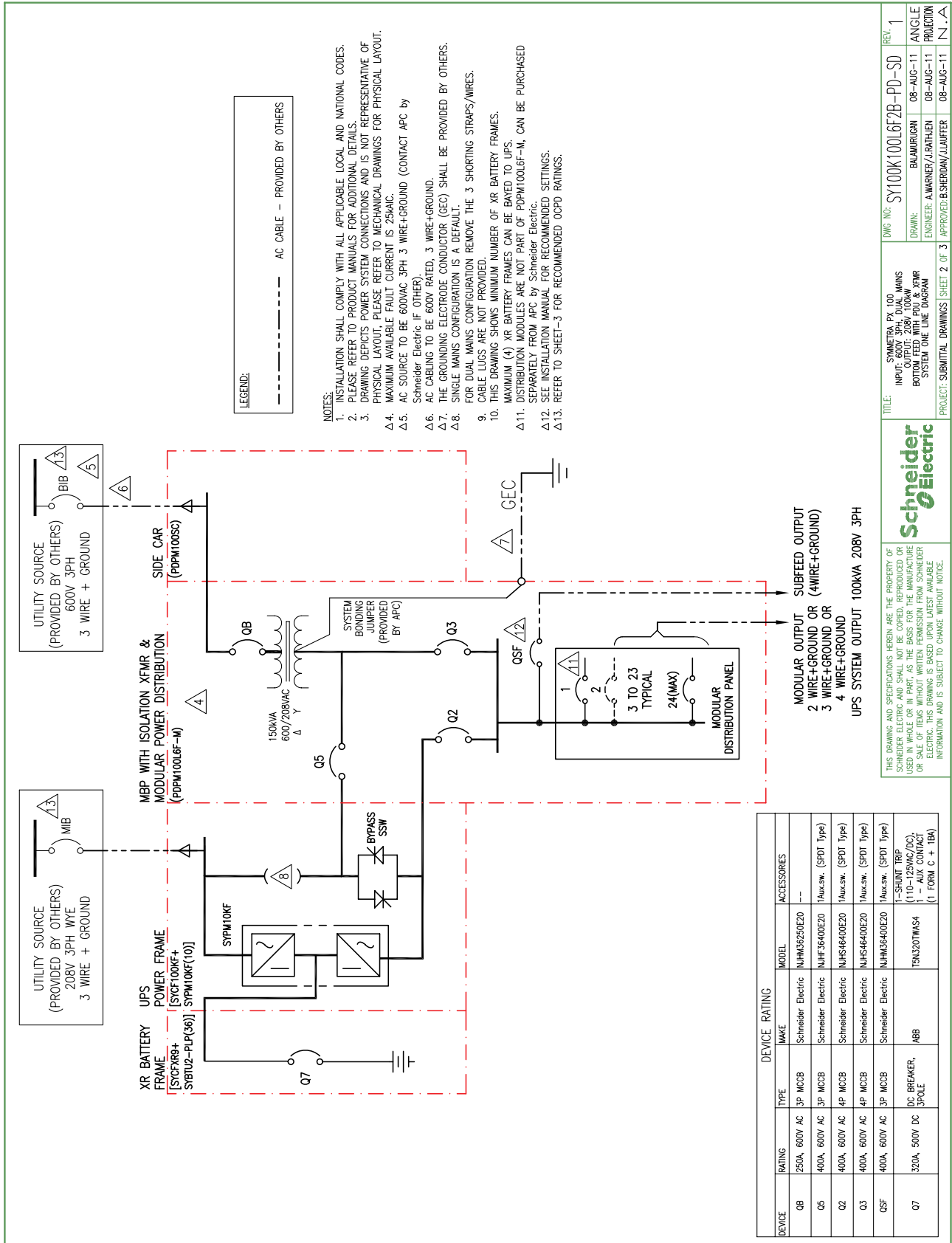
DEVICE RATING			
DEVICE	RATING	TYPE	MAKE
Q8	400A, 600V AC	3P MCCB	Schneider Electric NHHS6400E20
Q5	400A, 600V AC	3P MCCB	Schneider Electric NHFS36400E20
Q2	400A, 600V AC	4P MCCB	Schneider Electric NHHS46400E20
Q3	400A, 600V AC	4P MCCB	Schneider Electric NHHS46400E20
Q5F	400A, 600V AC	3P MCCB	Schneider Electric NHHS6400E20
Q7	320A, 500V DC	DC BREAKER, SPOLE	ABB TBN320THMS4

ACCESSORIES
1 - SHUNT TRIP (110-125MAZ/DC)
1 - AUX CONTACT (1 FORM C + 1BM)

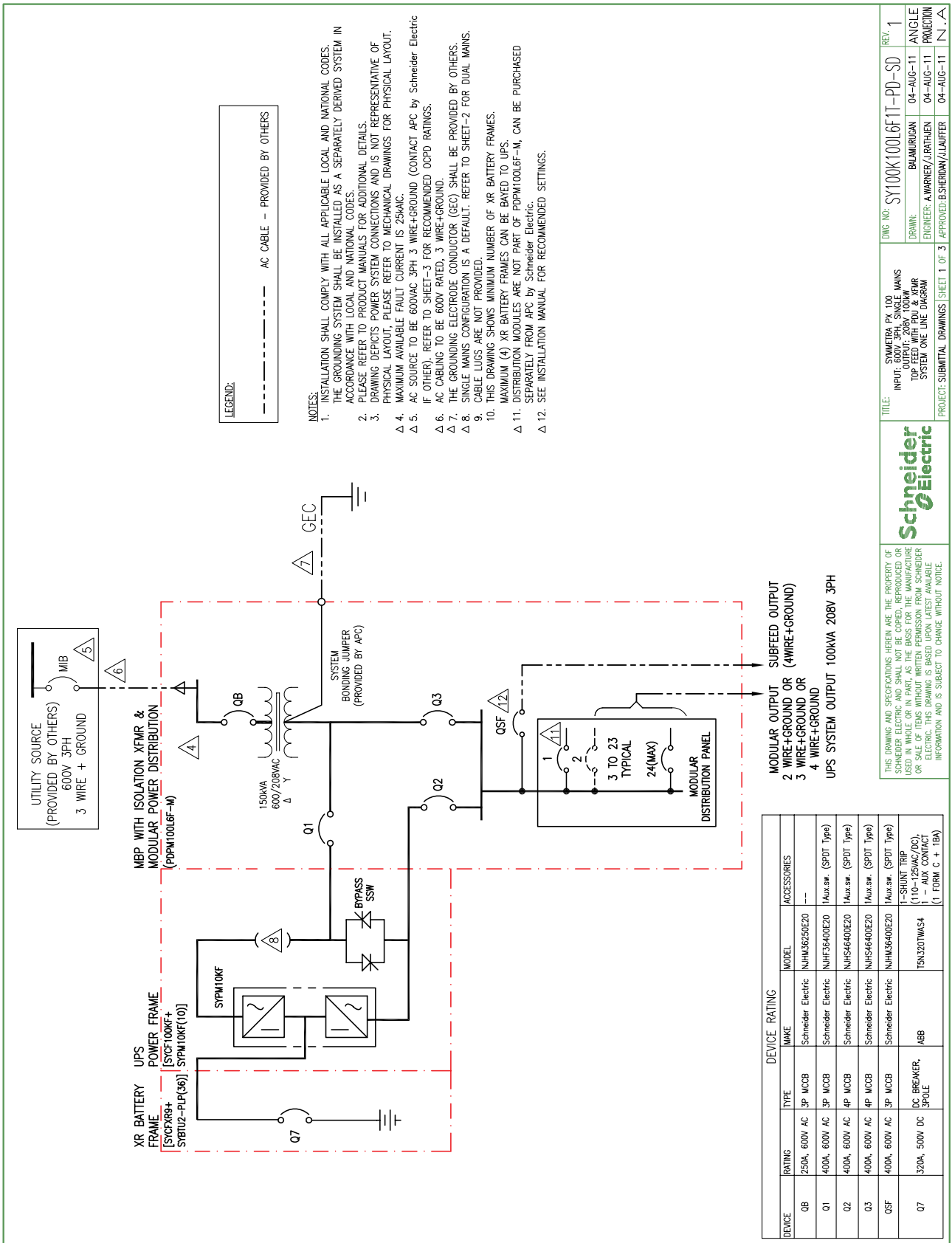
Symmetra PX 100 kW 600 V Single Mains Bottom Feed with PDU with Transformer



Symmetra PX 100 kW 600 V Dual Mains Bottom Feed with PDU with Transformer



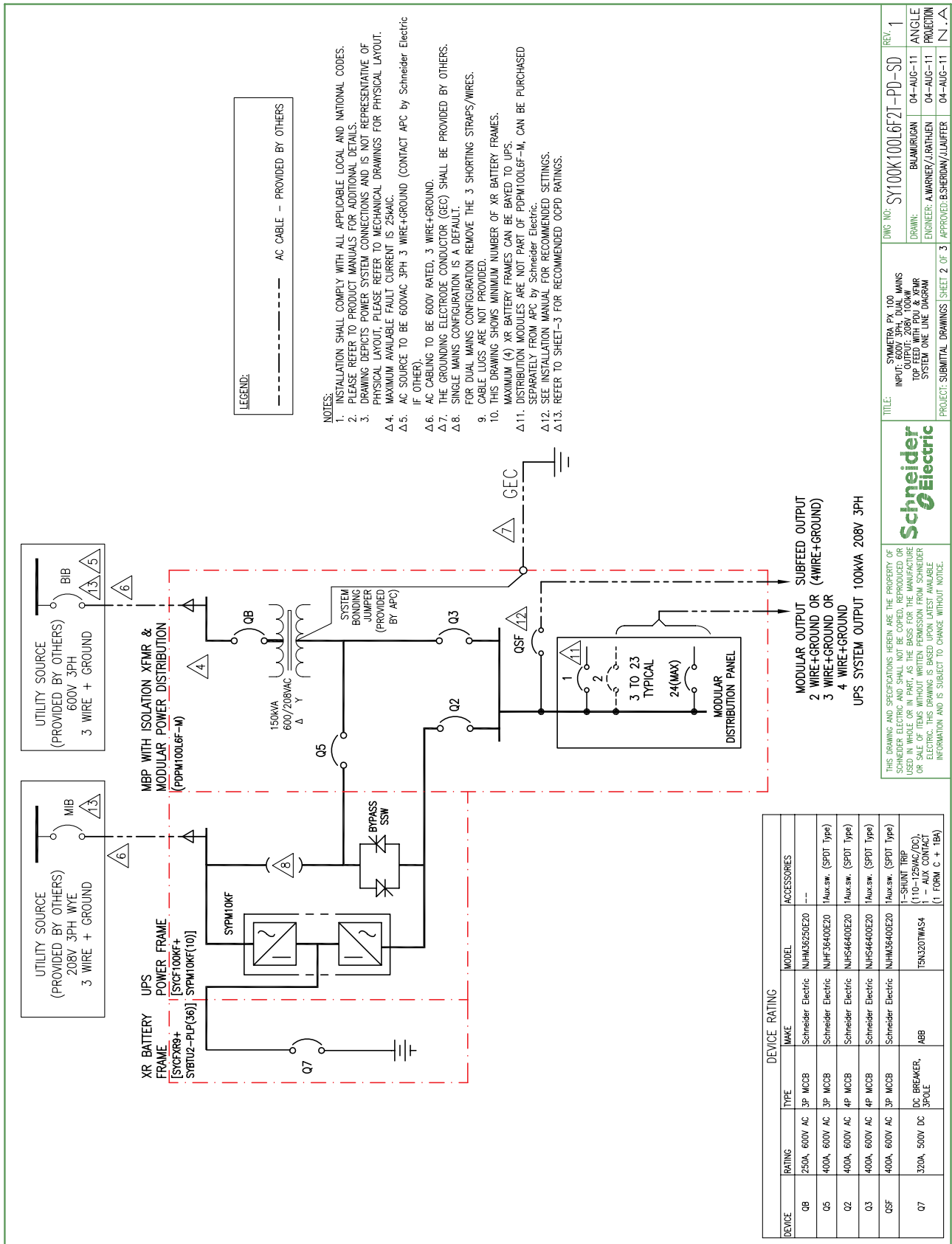
Symmetra PX 100 kW 600 V Single Mains Top Feed with PDU with Transformer



<p>DEVICE RATING</p> <table border="1"> <thead> <tr> <th>DEVICE</th> <th>RATING</th> <th>TYPE</th> <th>MAKE</th> <th>MODEL</th> <th>ACCESSORIES</th> </tr> </thead> <tbody> <tr> <td>Q8</td> <td>250A, 600V AC</td> <td>3P MCCB</td> <td>Schneider Electric</td> <td>NHHS6250E20</td> <td>---</td> </tr> <tr> <td>O1</td> <td>400A, 600V AC</td> <td>3P MCCB</td> <td>Schneider Electric</td> <td>NHFS3640E20</td> <td>1Aux.sw. (SPDT Type)</td> </tr> <tr> <td>O2</td> <td>400A, 600V AC</td> <td>4P MCCB</td> <td>Schneider Electric</td> <td>NHSA4640E20</td> <td>1Aux.sw. (SPDT Type)</td> </tr> <tr> <td>O3</td> <td>400A, 600V AC</td> <td>4P MCCB</td> <td>Schneider Electric</td> <td>NHSA4640E20</td> <td>1Aux.sw. (SPDT Type)</td> </tr> <tr> <td>Q5F</td> <td>400A, 600V AC</td> <td>3P MCCB</td> <td>Schneider Electric</td> <td>NHNS3640E20</td> <td>1Aux.sw. (SPDT Type)</td> </tr> <tr> <td>O7</td> <td>320A, 500V DC</td> <td>DC BREAKER, SPOLE</td> <td>ABB</td> <td>TBN320TMSA</td> <td>1-SHUNT TRIP (110-125VAC/DC), 1-AUX CONTACT (1 FORM C + 1B)</td> </tr> </tbody> </table>	DEVICE	RATING	TYPE	MAKE	MODEL	ACCESSORIES	Q8	250A, 600V AC	3P MCCB	Schneider Electric	NHHS6250E20	---	O1	400A, 600V AC	3P MCCB	Schneider Electric	NHFS3640E20	1Aux.sw. (SPDT Type)	O2	400A, 600V AC	4P MCCB	Schneider Electric	NHSA4640E20	1Aux.sw. (SPDT Type)	O3	400A, 600V AC	4P MCCB	Schneider Electric	NHSA4640E20	1Aux.sw. (SPDT Type)	Q5F	400A, 600V AC	3P MCCB	Schneider Electric	NHNS3640E20	1Aux.sw. (SPDT Type)	O7	320A, 500V DC	DC BREAKER, SPOLE	ABB	TBN320TMSA	1-SHUNT TRIP (110-125VAC/DC), 1-AUX CONTACT (1 FORM C + 1B)	<p>FILE: SYMMETRA PX 100 INPUT: 600V 3PH SINGLE MAINS TOP FEED WITH PDU & XFMR SYSTEM ONE LINE DIAGRAM</p> <p>PROJECT: SUBMITTAL DRAWINGS SHEET 1 OF 3</p> <p>ENGINEER: A.WARNER/J.RATHEN</p> <p>APPROVER: B.SHERIDAN/L.LAUFFER</p> <p>DATE: 04-AUG-11</p> <p>ANGLE: N.A.</p> <p>PROJECTION: N.A.</p> <p>REV: 1</p>
DEVICE	RATING	TYPE	MAKE	MODEL	ACCESSORIES																																						
Q8	250A, 600V AC	3P MCCB	Schneider Electric	NHHS6250E20	---																																						
O1	400A, 600V AC	3P MCCB	Schneider Electric	NHFS3640E20	1Aux.sw. (SPDT Type)																																						
O2	400A, 600V AC	4P MCCB	Schneider Electric	NHSA4640E20	1Aux.sw. (SPDT Type)																																						
O3	400A, 600V AC	4P MCCB	Schneider Electric	NHSA4640E20	1Aux.sw. (SPDT Type)																																						
Q5F	400A, 600V AC	3P MCCB	Schneider Electric	NHNS3640E20	1Aux.sw. (SPDT Type)																																						
O7	320A, 500V DC	DC BREAKER, SPOLE	ABB	TBN320TMSA	1-SHUNT TRIP (110-125VAC/DC), 1-AUX CONTACT (1 FORM C + 1B)																																						

Schneider Electric

Symmetra PX 100 kW 600 V Dual Mains Top Feed with PDU with Transformer



Options

Hardware Options

Symmetra Battery Systems

Symmetra PX Battery Frame for 400 V PX 96/160 kW & 208 V PX 100 kW for 9 Battery Modules	SYCFXR9
Symmetra PX Battery Frame for 400 V PX 96/160 kW & 208 V PX 100 kW with 9 Battery Modules & Startup	SYCFXR9-9
Symmetra PX Battery Frame for 400 V PX 96/160 kW & 208 V PX 100 kW for 9 Battery Modules & Startup	SYCFXR9-S

Maintenance Bypass Panels

Symmetra PX 100 kW Maintenance Bypass Panel, 208 V	SYMBP100F
--	-----------

100 kW Modular Power Distribution Units

Symmetra PX 100 kW Bottom Feed Side Car, 300 mm	PDPM100SC
100 kW Modular Power Distribution Unit, 208 V, 72 Poles, MBP, 1 Subfeed	PDPM100F-M
100 kW Modular Power Distribution Unit, Isolation Transformer, 208:208V, 72 Poles, MBP, 1 Subfeed	PDPM100F6F-M
100 kW Modular Power Distribution Unit, Isolation Transformer, 480:208V, 72 Poles, MBP, 1 Subfeed	PDPM100G6F-M
100 kW Modular Power Distribution Unit, Isolation Transformer, 600:208V, 72 Poles, MBP, 1 Subfeed	PDPM100L6F-M

Symmetra Accessories

Emergency Power Off (EPO)	EPW9
---------------------------	------

Modular Power Accessories

IT Power Distribution Module 2 Pole 3 Wire 30A L1-L2 L6-30 1200CM	PDM2330L6-12-1200
IT Power Distribution Module 2 Pole 3 Wire 30A L1-L2 L6-30 1400CM	PDM2330L6-12-1400
IT Power Distribution Module 2 Pole 3 Wire 30A L1-L2 L6-30 1680CM	PDM2330L6-12-1680
IT Power Distribution Module 2 Pole 3 Wire 30A L1-L2 L6-30 380cm	PDM2330L6-12-380
IT Power Distribution Module 2 Pole 3 Wire 30A L1-L2 L6-30 500CM	PDM2330L6-12-500
IT Power Distribution Module 2 Pole 3 Wire 30A L1-L2 L6-30 620CM	PDM2330L6-12-620
IT Power Distribution Module 2 Pole 3 Wire 30A L1-L2 L6-30 740CM	PDM2330L6-12-740
IT Power Distribution Module 2 Pole 3 Wire 30A L1-L2 L6-30 860CM	PDM2330L6-12-860
IT Power Distribution Module 2 Pole 3 Wire 30A L1-L2 L6-30 980CM	PDM2330L6-12-980
IT Power Distribution Module 2 Pole 3 Wire 30A L2-L3 L6-30 1200CM	PDM2330L6-23-1200
IT Power Distribution Module 2 Pole 3 Wire 30A L2-L3 L6-30 1400CM	PDM2330L6-23-1400
IT Power Distribution Module 2 Pole 3 Wire 30A L2-L3 L6-30 1680CM	PDM2330L6-23-1680
IT Power Distribution Module 2 Pole 3 Wire 30A L2-L3 L6-30 380CM	PDM2330L6-23-380
IT Power Distribution Module 2 Pole 3 Wire 30A L2-L3 L6-30 500CM	PDM2330L6-23-500
IT Power Distribution Module 2 Pole 3 Wire 30A L2-L3 L6-30 620CM	PDM2330L6-23-620
IT Power Distribution Module 2 Pole 3 Wire 30A L2-L3 L6-30 740CM	PDM2330L6-23-740
IT Power Distribution Module 2 Pole 3 Wire 30A L2-L3 L6-30 860CM	PDM2330L6-23-860
IT Power Distribution Module 2 Pole 3 Wire 30A L2-L3 L6-30 980CM	PDM2330L6-23-980
IT Power Distribution Module 2 Pole 3 Wire 30A L3-L1 L6-30 1200CM	PDM2330L6-31-1200
IT Power Distribution Module 2 Pole 3 Wire 30A L3-L1 L6-30 1400CM	PDM2330L6-31-1400
IT Power Distribution Module 2 Pole 3 Wire 30A L3-L1 L6-30 1680CM	PDM2330L6-31-1680

Modular Power Accessories

IT Power Distribution Module 2 Pole 3 Wire 30A L3-L1 L6-30 380CM	PDM2330L6-31-380
IT Power Distribution Module 2 Pole 3 Wire 30A L3-L1 L6-30 500CM	PDM2330L6-31-500
IT Power Distribution Module 2 Pole 3 Wire 30A L3-L1 L6-30 620CM	PDM2330L6-31-620
IT Power Distribution Module 2 Pole 3 Wire 30A L3-L1 L6-30 740CM	PDM2330L6-31-740
IT Power Distribution Module 2 Pole 3 Wire 30A L3-L1 L6-30 860CM	PDM2330L6-31-860
IT Power Distribution Module 2 Pole 3 Wire 30A L3-L1 L6-30 980CM	PDM2330L6-31-980
IT Power Distribution Module 3x1 Pole 3 Wire 20A 250V L5-20 UL 260cm 380cm 500cm	PDM1320L5-3P-1
IT Power Distribution Module 3x1 Pole 3 Wire 20A 250V L5-20 UL 680cm 860cm 1040cm	PDM1320L5-3P-2
IT Power Distribution Module 3x1 Pole 3 Wire 20A 240V L5-20 UL 1680cm 1680cm 1680cm	PDM1320L5-3P-3
IT Power Distribution Module 3 Pole 4 Wire 50A CS50 1040cm	PDM3450CS50-1040
IT Power Distribution Module 3 Pole 4 Wire 50A CS50 1680CM	PDM3450CS50-1680
IT Power Distribution Module 3 Pole 4 Wire 50A CS50 200cm	PDM3450CS50-200
IT Power Distribution Module 3 Pole 4 Wire 50A CS50 260cm	PDM3450CS50-260
IT Power Distribution Module 3 Pole 4 Wire 50A CS50 320cm	PDM3450CS50-320
IT Power Distribution Module 3 Pole 4 Wire 50A CS50 380cm	PDM3450CS50-380
IT Power Distribution Module 3 Pole 4 Wire 50A CS50 440cm	PDM3450CS50-440
IT Power Distribution Module 3 Pole 4 Wire 50A CS50 500cm	PDM3450CS50-500
IT Power Distribution Module 3 Pole 4 Wire 50A CS50 560cm	PDM3450CS50-560
IT Power Distribution Module 3 Pole 4 Wire 50A CS50 620cm	PDM3450CS50-620
IT Power Distribution Module 3 Pole 4 Wire 50A CS50 680cm	PDM3450CS50-680
IT Power Distribution Module 3 Pole 4 Wire 50A CS50 740c	PDM3450CS50-740
IT Power Distribution Module 3 Pole 4 Wire 50A CS50 800cm	PDM3450CS50-800
IT Power Distribution Module 3 Pole 4 Wire 50A CS50 860cm	PDM3450CS50-860
IT Power Distribution Module 3 Pole 4 Wire 50A CS50 920cm	PDM3450CS50-920
IT Power Distribution Module 3 Pole 4 Wire 50A CS50 980cm	PDM3450CS50-980
IT Power Distribution Module 3 Pole 4 Wire 60A IEC309 1040cm	PDM3460IEC309-1040
IT Power Distribution Module 3 Pole 4 Wire 60A IEC309 1680cm	PDM3460IEC309-1680
IT Power Distribution Module 3 Pole 4 Wire 60A IEC309 200cm	PDM3460IEC309-200
IT Power Distribution Module 3 POLE 4 WIRE 60A IEC309 260CM	PDM3460IEC309-260
IT Power Distribution Module 3 Pole 4 Wire 60A IEC309 320cm	PDM3460IEC309-320
IT Power Distribution Module 3 Pole 4 Wire 60A IEC309 380cm	PDM3460IEC309-380
IT Power Distribution Module 3 Pole 4 Wire 60A IEC309 440cm	PDM3460IEC309-440
IT Power Distribution Module 3 Pole 4 Wire 60A IEC309 500cm	PDM3460IEC309-500
IT Power Distribution Module 3 Pole 4 Wire 60A IEC309 560cm	PDM3460IEC309-560
IT Power Distribution Module 3 Pole 4 Wire 60A IEC309 620cm	PDM3460IEC309-620
IT Power Distribution Module 3 Pole 4 Wire 60A IEC309 680cm	PDM3460IEC309-680
IT Power Distribution Module 3 Pole 4 Wire 60A IEC309 740cm	PDM3460IEC309-740
IT Power Distribution Module 3 Pole 4 Wire 60A IEC309 800cm	PDM3460IEC309-800
IT Power Distribution Module 3 Pole 4 Wire 60A IEC309 860cm	PDM3460IEC309-860
IT Power Distribution Module 3 Pole 4 Wire 60A IEC309 920cm	PDM3460IEC309-920
IT Power Distribution Module 3 Pole 4 Wire 60A IEC309 980cm	PDM3460IEC309-980
IT Power Distribution Module 3 Pole 5 Wire 20A L21-20 1040cm	PDM3520L2120-1040
IT Power Distribution Module 3 Pole 5 Wire 20A L21-20 1680cm	PDM3520L2120-1680
IT Power Distribution Module 3 Pole 5 Wire 20A L21-20 200cm	PDM3520L2120-200
IT Power Distribution Module 3 Pole 5 Wire 20A L21-20 260cm	PDM3520L2120-260
IT Power Distribution Module 3 Pole 5 Wire 20A L21-20 320cm	PDM3520L2120-320

Modular Power Accessories

IT Power Distribution Module 3 Pole 5 Wire 20A L21-20 380cm	PDM3520L2120-380
IT Power Distribution Module 3 Pole 5 Wire 20A L21-20 440cm	PDM3520L2120-440
IT Power Distribution Module 3 Pole 5 Wire 20A L21-20 500cm	PDM3520L2120-500
IT Power Distribution Module 3 Pole 5 Wire 20A L21-20 560cm	PDM3520L2120-560
IT Power Distribution Module 3 Pole 5 Wire 20A L21-20 620cm	PDM3520L2120-620
IT Power Distribution Module 3 Pole 5 Wire 20A L21-20 680cm	PDM3520L2120-680
IT Power Distribution Module 3 Pole 5 Wire 20A L21-20 740cm	PDM3520L2120-740
IT Power Distribution Module 3 Pole 5 Wire 20A L21-20 800cm	PDM3520L2120-800
IT Power Distribution Module 3 Pole 5 Wire 20A L21-20 860cm	PDM3520L2120-860
IT Power Distribution Module 3 Pole 5 Wire 20A L21-20 920cm	PDM3520L2120-920
IT Power Distribution Module 3 Pole 5 Wire 20A L21-20 980cm	PDM3520L2120-980
IT Power Distribution Module 3 Pole 5 Wire 30A L21-30 1040cm	PDM3530L2130-1040
IT Power Distribution Module 3 Pole 5 Wire 30A L21-30 1680cm	PDM3530L2130-1680
IT Power Distribution Module 3 Pole 5 Wire 30A L21-30 200cm	PDM3530L2130-200
IT Power Distribution Module 3 Pole 5 Wire 30A L21-30 260cm	PDM3530L2130-260
IT Power Distribution Module 3 Pole 5 Wire 30A L21-30 320cm	PDM3530L2130-320
IT Power Distribution Module 3 Pole 5 Wire 30A L21-30 380cm	PDM3530L2130-380
IT Power Distribution Module 3 Pole 5 Wire 30A L21-30 440cm	PDM3530L2130-440
IT Power Distribution Module 3 Pole 5 Wire 30A L21-30 500cm	PDM3530L2130-500
IT Power Distribution Module 3 Pole 5 Wire 30A L21-30 560cm	PDM3530L2130-560
IT Power Distribution Module 3 Pole 5 Wire 30A L21-30 620cm	PDM3530L2130-620
IT Power Distribution Module 3 Pole 5 Wire 30A L21-30 680cm	PDM3530L2130-680
IT Power Distribution Module 3 Pole 5 Wire 30A L21-30 740c	PDM3530L2130-740
IT Power Distribution Module 3 Pole 5 Wire 30A L21-30 800cm	PDM3530L2130-800
IT Power Distribution Module 3 Pole 5 Wire 30A L21-30 860cm	PDM3530L2130-860
IT Power Distribution Module 3 Pole 5 Wire 30A L21-30 920cm	PDM3530L2130-920
IT Power Distribution Module 3 Pole 5 Wire 30A L21-30 980cm	PDM3530L2130-980

Modular Power Distribution

Modular Remote Power Panel, 144 kW, 400 A, 208 V, 72 Pole, 300 mm	PDPM144F
Modular Rack Distribution Panel, 72 kW, 200 A, 208 V, 18 Pole, 5U	PDPM72F-5U

Configurable Power Distribution

InfraStruxure PDU, 150kVA, 416A, 480V:208V Isolation Transformer, 84 Poles, 1 Subfeed	PDPB150G6F
Rack Distribution Panel 208 V	PDRDPF10U-R

Symmetra Power Module

Symmetra PX 10 kW Power Module, 208 V	SYPM10KF2
---------------------------------------	-----------

Seismic Kits

Seismic Kit for 600 mm Symmetra PX Battery Cabinets	SYOPT009
Seismic Kit for 300 mm Symmetra PX 100, Symmetra PX 250/500, and Modular PDU Frames	SYOPT300
Seismic Kit for 600 mm Symmetra PX 100 and Symmetra PX 250/500 Frames	SYOPT600

Configuration Options

- Single or dual feed
- Top or bottom feed
- Internal N+1 redundancy
- Swappable 9 Ah batteries
- Up to four extended run battery enclosures
- Seismic bracket kits
- Modular PDU with maintenance bypass and swappable power distribution modules (600:208 V, 480:208 V, 208:208 V, 208 V transformerless)
- 300 mm maintenance bypass panel
- Bottom Feed Sidecar (supports bottom feed utility inputs for installations that include a Modular PDU with a transformer)
- SmartSlot communication cards
- StruxureWare Data Center Expert compatible
- Custom wall-mount maintenance bypass panel (contact Schneider Electric)
- Generator compatible

Schneider Electric Limited Factory Warranty

Three Phase Power Products or Cooling Solutions One- Year Factory Warranty

The limited warranty provided by Schneider Electric in this Statement of Limited Factory Warranty applies only to products you purchase for your commercial or industrial use in the ordinary course of your business.

Terms of Warranty

Schneider Electric warrants that the product shall be free from defects in materials and workmanship for a period of one year from the date of product start-up when start-up is performed by Schneider Electric-authorized service personnel and occurs within six months of the Schneider Electric shipment date. This warranty covers repairing or replacing any defective parts including on-site labor and travel. In the event that the product fails to meet the foregoing warranty criteria, the warranty covers repairing or replacing defective parts at the sole discretion of Schneider Electric for a period of one year from the shipment date. For Schneider Electric cooling solutions, this warranty does not cover circuit breaker resetting, loss of refrigerant, consumables, or preventive maintenance items. Repair or replacement of a defective product or part thereof does not extend the original warranty period. Any parts furnished under this warranty may be new or factory-remanufactured.

Non-transferable Warranty

This warranty is extended to the first person, firm, association or corporation (herein referred to by "You" or "Your") for whom the Schneider Electric product specified herein has been purchased. This warranty is not transferable or assignable without the prior written permission of Schneider Electric.

Assignment of Warranties

Schneider Electric will assign you any warranties which are made by manufacturers and suppliers of components of the Schneider Electric product and which are assignable. Any such warranties are assigned "AS IS" and Schneider Electric makes no representation as to the effectiveness or extent of such warranties, assumes no responsibility for any matters which may be warranted by such manufacturers or suppliers and extends no coverage under this Warranty to such components.

Drawings, Descriptions

Schneider Electric warrants for the warranty period and on the terms of the warranty set forth herein that the Schneider Electric product will substantially conform to the descriptions contained in the Schneider Electric Official Published Specifications or any of the drawings certified and agreed to by contract with Schneider Electric if applicable thereto ("Specifications"). It is understood that the

Specifications are not warranties of performance and not warranties of fitness for a particular purpose.

Exclusions

Schneider Electric shall not be liable under the warranty if its testing and examination disclose that the alleged defect in the product does not exist or was caused by end user or any third person misuse, negligence, improper installation or testing. Further, Schneider Electric shall not be liable under the warranty for unauthorized attempts to repair or modify wrong or inadequate electrical voltage or connection, inappropriate on-site operation conditions, corrosive atmosphere, repair, installation, start-up by non-Schneider Electric designated personnel, a change in location or operating use, exposure to the elements, Acts of God, fire, theft, or installation contrary to Schneider Electric recommendations or specifications or in any event if the Schneider Electric serial number has been altered, defaced, or removed, or any other cause beyond the range of the intended use.

THERE ARE NO WARRANTIES, EXPRESS OR IMPLIED, BY OPERATION OF LAW OR OTHERWISE, OF PRODUCTS SOLD, SERVICED OR FURNISHED UNDER THIS AGREEMENT OR IN CONNECTION HERewith. SCHNEIDER ELECTRIC DISCLAIMS ALL IMPLIED WARRANTIES OF MERCHANTABILITY, SATISFACTION AND FITNESS FOR A PARTICULAR PURPOSE. SCHNEIDER ELECTRIC EXPRESS WARRANTIES WILL NOT BE ENLARGED, DIMINISHED, OR AFFECTED BY AND NO OBLIGATION OR LIABILITY WILL ARISE OUT OF, SCHNEIDER ELECTRIC RENDERING OF TECHNICAL OR OTHER ADVICE OR SERVICE IN CONNECTION WITH THE PRODUCTS. THE FOREGOING WARRANTIES AND REMEDIES ARE EXCLUSIVE AND IN LIEU OF ALL OTHER WARRANTIES AND REMEDIES. THE WARRANTIES SET FORTH ABOVE CONSTITUTE SCHNEIDER ELECTRIC SOLE LIABILITY AND PURCHASER'S EXCLUSIVE REMEDY FOR ANY BREACH OF SUCH WARRANTIES. SCHNEIDER ELECTRIC WARRANTIES RUN ONLY TO PURCHASER AND ARE NOT EXTENDED TO ANY THIRD PARTIES.

IN NO EVENT SHALL SCHNEIDER ELECTRIC, ITS OFFICERS, DIRECTORS, AFFILIATES OR EMPLOYEES BE LIABLE FOR ANY FORM OF INDIRECT, SPECIAL, CONSEQUENTIAL OR PUNITIVE DAMAGES, ARISING OUT OF THE USE, SERVICE OR INSTALLATION, OF THE PRODUCTS, WHETHER SUCH DAMAGES ARISE IN CONTRACT OR TORT, IRRESPECTIVE OF FAULT, NEGLIGENCE OR STRICT LIABILITY OR WHETHER SCHNEIDER ELECTRIC HAS BEEN ADVISED IN ADVANCE OF THE POSSIBILITY OF SUCH DAMAGES, SPECIFICALLY, SCHNEIDER ELECTRIC IS NOT LIABLE FOR ANY COSTS, SUCH AS LOST PROFITS OR REVENUE, LOSS OF EQUIPMENT, LOSS OF USE OF EQUIPMENT, LOSS OF SOFTWARE, LOSS OF DATA, COSTS OF SUBSTITUANTS, CLAIMS BY THIRD PARTIES, OR OTHERWISE.

NO SALESMAN, EMPLOYEE OR AGENT OF SCHNEIDER ELECTRIC IS AUTHORIZED TO ADD TO OR VARY THE TERMS OF THIS WARRANTY. WARRANTY TERMS MAY BE MODIFIED, IF AT ALL, ONLY IN WRITING SIGNED BY AN SCHNEIDER ELECTRIC OFFICER AND LEGAL DEPARTMENT.

Warranty Claims

Customers with warranty claims issues may access the SCHNEIDER ELECTRIC worldwide customer support network through the SCHNEIDER ELECTRIC web site: <http://www.SCHNEIDER ELECTRIC.com/support/contact/>. Select your country from the country selection pull-down menu. Open the Support tab at the top of the web page to obtain contact information for customer support in your region.

Schneider Electric
35 rue Joseph Monier
92500 Rueil Malmaison
France

+ 33 (0) 1 41 29 70 00

www.schneider-electric.com

As standards, specifications, and design change from time to time,
please ask for confirmation of the information given in this publication.

© 2013 – 2015 Schneider Electric. All rights reserved.

990–5240B–001